

REGION XI HANDBOOK



**Association of
California
School
Administrators**

2013-2014

ACSA Region XI Handbook

2013 - 2014

Table of Contents

Region XI Website and our Advertisers	3
State ACSA Offices and Services	5
Region XI President's Message	7
Region XI Officers and Board Members	8-13
ACSA Mission Statement	13
Region XI President's Goal for 2013-2014	13
Region XI Budget for 2013-2014	15
Roster of Region XI Presidents	15
Region XI Executive Director's Message	17
State Council Representatives	18-19
State Committee Representatives	20
Region/ Charter/ State Calendar 2013-2014	22-25
Region XI Newsletter/ Handbook Deadline Dates	25
Charter Council Officers and Directors	
East Kern	27
Inyo/Bodie	28
Kings	29-30
Tulare	31-32
West Kern	33-34
How state ACSA works	37
ACSA Organization Chart 3	38

www.acsaxi.org

Appreciation.... To All Our Friendly Advertisers

- A+ Auto & Home Insurance (California Casualty)
 - Bell Works Educational Solution
 - Buckham- Mitchell, Inc
- Educational Employees Credit Union
 - FAST Federal Credit Union
 - Hodel's Restaurant
 - IDEA! Printing & Graphics
 - Jakes Steakhouse
 - Kern Trophies
- Southwest School Supplies

FAST: *family*

Membership open
to anyone who lives,
works, or worships in
Kings County.

- Checking & Savings
- Online Banking & Bill Pay
- Auto / Home / Signature Loans
- Visa Debit and Credit cards
- Fee-free ATM Deposits & Withdrawals
Worldwide with Co-Op Network
- Investment Services & Retirement Planning
- Direct Deposit
Most payrolls post to your
account up to 2 days early!
- Financial Education



FUN : SIMPLE : FAST

Hanford • Lemoore • Avenal

559-584-0922 | www.fastcu.com



Offices and Services



Executive Director

Wesley Smith

1029 J Street, Suite 500
Sacramento, CA 95814
Tel (916) 444-3216
(800) 608-2272
Fax (916) 290-0420
wsmith@acsa.org



Assistant Executive Director, Communications

Julie White

Tel (916) 329-3832
e-fax (916) 290-0402
jwhite@acsa.org

Assistant Executive Director, Educational Services

Chris Adams

Tel (650) 259-3416
Fax (650) 240-0676

Assistant Executive Director, Financial Services

David Gasser

Tel (650) 259-3431
e-fax (650) 240-0673
dgasser@acsa.org

Government Relations

Tel (916) 329-3822
e-fax (916) 290-0420
kstapfwalters@acsa.org

Assistant Executive Director, Member Services & Professional Standards

Joseph Jones

Tel (916) 329-3823
e-fax (916) 290-0394
jjones@acsa.org

Sacramento

1029 J Street, Suite 500
Sacramento, CA 95814
(916) 444-3216
(800) 608-ACSA
Fax (916) 444-3739

Burlingame

1575 Bayshore Highway
Burlingame, CA 94010
(650) 692-4300
(800) 608-ACSA

Educational Services
Fax (650) 692-6858

Executive Office
Fax (650) 692-1508

Financial Services
Fax (650) 259-1029

Member Services & SASS
Fax (650) 692-7297

Ontario

Palm Brook Corporate Center
3602 Inland Empire Boulevard Suite A-230
Ontario, CA 91764
(909) 484-7503
(800) 608-ACSA
Fax (909) 484-7504



ACSA President

Mark Eckers
Superintendent
Fountain Valley School District
10055 Slater Avenue

Work (714) 843-3255
Cell (714) 319-5730
Fax (714) 841-0356
eckersm@fusd.us

Financial Education: Money Matters



Educational Employees Credit Union continues to be your partner in education.

EECU is dedicated to providing financial education to our members and community by hosting educational workshops on various financial topics. Each workshop is tailored to the specific audience (elementary through college students, parents, teachers, and employees).

Topics covered during a workshop include:

- **Elementary School •**
Saving Money Is Fun!
- **Middle School •**
Money Doesn't Grow On Trees
- **High School •**
Personal Finance
- **College/Adult Education •**
Budgeting/Credit/Identity Theft

To schedule a presentation and/or workshop, contact:
Jeff Williams, Member Education Director

Email: jeffw@myeecu.org
Phone: 559-437-7796



**Educational
Employees**
CREDIT UNION



myEECU.org

Region XI President's Message

Tom Addington

Region XI President 2013-2014



Welcome to the 2013-14 School Year and a brand new year of ACSA!

ACSA is you! Your leadership on a day in and day out basis in all aspects of your work serves to underscore that Leadership Matters! I am honored to serve in the capacity of Region XI president for you during this year.

Our association is moving strategically ahead to shape our educational influence into being a dominant and driving force of education in California and beyond.

I invite you to learn more about the strategic plan and the transformation that our association is in the process of embracing through this transformative change.

I also want to thank you for your continued involvement with ACSA! Our professional association is all about you, our members. As we begin another exciting and challenging school year your involvement at the local, regional, and state level is paramount to being at the forefront of advocacy for educational excellence and high standards for students.

I encourage each of you to become involved with ACSA. This year Region XI continues its drive to include as many Region members as possible in region events. Please check out our region website on ACSA Region XI, and look for opportunities to get involved.

During the Region XI Planning meeting, your board members reviewed the ACSA strategic plan, and focused on three areas to target during the 2013-14 school year. These strategic areas are:

Focus Area 1 (Strategy I)

We will be Authoritative Advocates for all matters pertaining to education and its leaders.

- 1) Developing a list of talking points representative of educational concerns for Region XI
- 2) Increasing Participation in Legislative Action (Single day, Multiple Contact and Local Involvement)
- 3) Increasing Connection with Local Representatives
- 4) Influencing the ACSA Voice with Region XI areas of importance

Focus Area 2 (Strategy II)

We will be the premier provider of an array of compelling learning experiences dedicated to developing the capacity of all education leaders

- 1) Surveying charter strengths, areas of expertise to build network of premier and compelling network opportunities.
- 2) Investigating the ability to co-sponsor with Educational Partners
- 3) Building Resource of workshops/curriculum/training within the Region Website as a repository of information
- 4) Supporting academies/ACSA Training sponsored during the Region XI area during the 2013-14 academic year

Focus Area 3 (Strategy IV)

We will build and maintain vibrant, purposeful networks of educational communities

- 1) Developing Job Alike Activities
- 2) Considering Board Position at Region XI (Mentoring/Networking/Job Alike) Networking Coordinator
- 3) Encouraging local charters to build Mentoring and job alike networking and interaction

This year will bring many opportunities for growth and success, if I can be of service to you, please contact me via email at darthhr@me.com or by telephone at 559-925-2619.

Sincerely,

Tom Addington
Region 11 President 2013-14

ACSA Region XI Officers and Directors 2013-2014



PRESIDENT-ELECT

Tom Addington, Superintendent

Central Union School District

15783 18th Ave.

Lemoore, CA 93245

W (559) 925-2619 x 618

C (559) 381-3662

darthhr@me.com

PRESIDENT-ELECT

Blanca Cavazos, Superintendent

Taft Union Highschool District

Wildcat Way

Taft, CA 93268

W (661) 763-2300

H (661) 873-8534

C (661) 330-3300

bcavazos@taft.k12.ca.us



VICE PRESIDENT

Valerie Brown, Principal

Maple School

Tulare City School District

640 West Cross St.

Tulare, CA 93274

W (559) 685-7270 Fax (559) 685-7337

C (559) 799-8641 H (559) 627-0992

vbrown@tcsd.k12.ca.us

VICE PRESIDENT: LEGISLATIVE ACTION

Terri Rufert, Superintendent

Sundale Union Elementary School District

13990 Ave 240

Tulare, CA 93274

W (559) 688-7451 Fax (559) 688-5905

C (559) 972-7320 H (559) 686-0436

terri.rufert@sundale.org



SECRETARY

Jana Freeman, Principal

Royal Oaks Elementary School

Visalia Unified School District

1323 Clover Dr.

Visalia, CA 93277

W (559) 730-7787

C (559) 936-3045 Fax (559) 730-7844

jfreeman@vusd.org

**TREASURER****David Bowling, Principal**

Teresa Burke Elementary School
 Wasco Union School District
 639 Broadway
 Wasco, CA 93280
 W (661) 758-7480 Fax (661) 758-3024
 dabowling@wusd.org

PAST-PRESIDENT**Kirsti Smith, Principal**

Murray Middle School
 Sierra Sands Unified School District
 236 E.Dana Ave.
 Ridgecrest, CA 93555
 W (760) 499-1821 H (760) 371-5700
 C (760) 371-5700 Fax (760) 446-3838
 ksmith@ssusd.org

**STATE DIRECTOR (2014)****Dr. John Snavely, Superintendent**

Porterville, Unified School District
 600 West Grand Ave
 Porterville, CA 93257
 W (559) 793-2455 H (559) 784-8414
 Fax (559) 793-1088 C (559) 359-8574
 jsnavely@portervilleschools.org

PAST STATE DIRECTOR**Dr. Carl Olsen, Superintendent**

Associate Professor of Education
 Point Loma Nazarene University
 780 Hollytree Lane
 Wasco, CA 93280
 W (661) 321-3480 Fax (661) 321-3488
 C (661) 201-0923 H (661) 758-4027
 olsencfl@gmail.com

**STATE SUPERINTENDENCY COUNCIL (2014)****Craig Wheaton, Superintendent**

Visalia USD
 5000 W. Cypress Ave.
 Visalia, CA 93277
 W (559) 730-7515 F (559) 730-7553
 cwheaton@vusd.org



DIRECTOR (2014)
East Kern Charter
Paul Press, Principal
 Monroe Continuation High School
 126 South Snyder Avenue
 Tehachapi, CA 93561
 (661) 822-2123 Fax (661) 822-2188
 ppress@teh.k12.ca.us

DIRECTOR (2015)
Inyol/Mono Charter
TBD



DIRECTOR (2015)
Heiko Sweeney, Principal
 Akers School
 Central Union Elementary School District
 15783 18th Ave.
 Lemoore, CA 93245
 W (559) 998-5707 Fax (559) 998-7517
 hsweeney@central.k12.ca.us

DIRECTOR (2015)
Tulare County Charter
Dr. Carolyn Kehrli, Superintendent
 Cutler-Orosi JUSD
 12623 Avenue 416
 Orosi, CA 93647
 W (559) 528-4763 C (559) 999-9245
 F (559) 528-9319
 ckehrli@cojUSD.org



DIRECTOR (2015)
Tulare County Charter
Dr. Jeremy Powell, Superintendent/Principal
 Sequoia Union Elementary School District
 Porterville Unified School District
 2395 Avenue 324 - PO Box 44260
 Lemon Cove, CA 93244
 W (559) 564-2106 F (559) 564-2136
 C (559) 741-3830 H (559) 592-5619
 jpowell@sequoia.k12.ca.us



DIRECTOR (2015)
Tulare County Charter
Dr. Guadalupe Solis, Assistant Superintendent
 Tulare County Office of Education
 2637 Burrell
 Visalia, CA
 W (559) 733-6328 F (559) 737-9378
 H (559) 924-4109 C (559) 288-9708
 gsolis@tcoe.org

DIRECTOR (2015)

West Kern Charter

Diane Cox, Assistant Superintendent

Bakersfield City School District
 1300 Baker St., Bakersfield, CA 93305
 W (661) 631-4856 F (661) 324-3274
 C (661) 979-8544
 coxd@bcsd.com



DIRECTOR (2015)

West Kern Charter

Danyel Kelly, Principal

Fruitvale School District
 Discovery Elementary
 7500 Vaquero Ave, Bakersfield, CA 93308
 W (661) 589-7336 F (661) 587-9413
 H (661) 201-0917 C (661) 201-0917
 gsolis@tcoe.org

DIRECTOR (2014)

Matt Torres, Assistant Superintendent

Fruitvale School District
 7311 Rosedale Hwy., Bakersfield, CA 93308
 W (661) 589-3830 ext. 207 F (661) 589-3674
 C (661) 487-8074
 matorres@fruitvale.k12.ca.us



MEMBER SERVICES (2014)

Jeff Vandernoor, Principal

Valley Oaks Charter School
 Kern County Superintendent of Schools
 3501 Chester Avenue, Bakersfield, CA 93301
 W (661) 852-6752 F (661) 633-5287
 H (661) 859-6752 C (661) 859-6725
 jvandernoor@kern.org



EAST KERN CHARTER PRESIDENT
Melissa Christman, Principal
 Faller Elementary
 Sierra Sands USD
 113 Felspar Ave.
 Ridgecrest, CA 93555
 W (760) 499-1695 C (760) 608-2180
 mchristman@ssusd.org



INYO/BODIE CHARTER PRESIDENT
Don Clark, Superintendent
 East Sierra Unified School District
 P.O. Box 575
 Bridgeport, CA 93571
 W (760) 932-7443 H (559) 495-2562
 Fax (760) 932-7441 C (707) 396-6646
 dclark@esusd.org



KINGS COUNTY CHARTER PRESIDENT
Dr. Robert Hudson, Superintendent
 Akers School
 Central Union Elementary School District
 15783 18th Ave.
 Lemoore, CA 93245
 W (559) 998-5707 Fax (559) 998-7517
 hsweeney@central.k12.ca.us



TULARE COUNTY CHARTER PRESIDENT
Lora Haston, Superintendent-Principal
 Alta Vista Elementary School
 2293 E. Crabtree Ave.
 Porterville, California 93257
 W (559) 782-5700 Fax (559) 782-5715
 lhaston@alta-vista.k12.ca.us



WEST KERN CHARTER PRESIDENT
Matt Diggle, Assistant Principal
 Fruitvale Elementary School
 Endeavour Elementary
 9300 Meacham Rd, Bakersfield, CA 93312
 W (661) 588-3550 Fax (661) 587-9318
 mdiggle@fruitvale.k12.ca.us



EXECUTIVE DIRECTOR REGION XI

David Tonini

241 East Parkview

Visalia, CA 93277

H (559) 732-6356

C (559) 280-6228

davidto02@comcast.net

NEWSLETTER/ HANDBOOK EDITOR

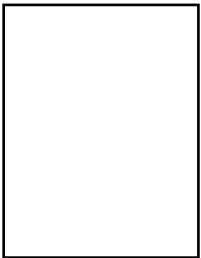
Richard A. Schlagel

787 North "G" Street

Porterville, CA 93257

W (559) 784-1270

raschlagel1927@yahoo.com



REGION XI Membership Recruiter

Michael Hernandez, Principal

Visalia Unified School District

Valley Oak Middle School

2000 N. Lovers Lane

Visalia, CA 93292

(559) 679-8520

mhernandez@acsa.org



Association of California School Administrators

Mission Statement

The mission of the Association of California Administrators, the driving force of education is California and beyond, is to ensure the creation of communities of learning and teaching that serve both the aspirations of individual students and the greater good of society, through this unique and indispensable coalition distinguished by:

- Bold and authoritative advocacy;
- dedication to the highest personal and professional ethics;
- inspiration networks of discovery and sharing of knowledge;
- mutual commitment to excellence; and
- universal accessibility to learning.

Region XI President's Goals for 2013-2014

Goal 1 (Strategy I)

We will be Authorative Advocates for all matters pertaining to education and its leaders.

Goal 2 (Strategy II)

We will be the premier provider of an array of compelling learning experiences dedicated to developing the capacity of all educational leaders.

Goal 3 (Strategy III)

We will build and maintain vibrant, purposeful networks of eduactional communitites.



Spend Less and Get More

Why pay more? Bellwork offers affordable, efficient, and effective daily standards practice and assessment programs at about half the cost of competitive programs.

**Congratulations to the following
Region XI Bellwork users!**



Morningside Elementary (K-5) - Delano Union Elementary
API Growth Using Bellwork



Olive Street Elementary (K-6) - Porterville Unified
API Growth Using Bellwork



Research-based and state-approved supplemental curriculum: Reading/Language Arts, Mathematics, Science, History-Social Science, and Writing for Levels K-12.

Order Now! Give us a call at 1-800-782-8869 or visit us online at bellwork.com.

REGION XI BUDGET 2013-2014

INCOME	ESTIMATED
1. Conference	2,000.00
2. Dues Rebates	57,000.00
3. Interest	200.00
4. Miscellaneous	2,850.00
5. Newsletter/Handbook	3,000.00
TOTAL	63,050.00

Expenditures	ADOPTED (09/19/2013)
1. Awards Lucheon	3,000.00
2. Board of Directors	800.00
3. Clerical and Supplies	500.00
4. Every Student Succeeding	1,000.00
5. Executive Director Expenses	4,276.00
6. Legislative Action	7,000.00
7. Newsletter/Handbook	1,800.00
8. Newsletter Editor Expenses	2,500.00
9. Newsletter Editor Salary	5,024.00
10. Membership	500.00
11. Mentor Program	1,000.00
12. Phone	600.00
13. President	1,500.00
14. Professional Development	5,150.00
15. Public Relations/Awards	1,800.00
16. Rebates to Charters	12,300.00
17. Region Conference	1,000.00
18. Region Deledgate Assembly	2,500.00
19. Region Retreat	3,000.00
20. Scholarships	4,500.00
21. State Delegate Assembly	790.00
22. Website	0.00
23. Reserves	2,510.00
TOTAL	63,050.00

ROSTER OF REGION XI PRESIDENTS

1971-72 John Prueitt	1985-86 Anne Scott	1999-00 Guadalupe Solis
1972-73 Sherlo Shively	1986-87 David Itzenhauser	2000-01 Mollie Graham
1973-74 J. Sam Wallace	1987-88 Bill Black	2001-02 Sally Mailand
1974-75 DeWeese Stevens	1988-89 Al Sandrini	2002-03 Brian Mark
1975-76 Richard Ehr Gott	1989-90 Nancy Cook	2003-04 Steve Tietjen
1976-77 Betty Jane Tiffany	1990-91 James A. Forrest	2004-05 Christine Frazier
1977-78 Herb Neufeld	1991-92 Tom Bates	2005-06 Craig Wheaton
1978-79 Gene Billingsley	1992-93 Lillian Tafoya	2006-07 Joanna Rummer
1979-80 Albert Roberts	1993-94 Don Erwin	2007-08 Christine Andrada
1980-81 James Fillbrandt	1994-95 John M. Hamlin	2008-10 Terri Rufert
1981-82 Richard Schlagel	1995-96 John Bogie	2010-11 Rebecca Mestaz
1982-83 Anaheed Solakian	1996-97 Walt L. Hanline	2011-12 Jose Morales
1983-84 Ed Baldwin	1997-98 Carolyn Kehrli	2012-2013 Kirsti Smith
1984-85 Bill Williams	1998-99 Milt Woolsey	2013-2014 Tom Addington

IDEA!

PRINTING & GRAPHICS INC.

Helping Drive Business to your Door.



559.733.4149 • Fax 559.636.3690
1921 E. Main Street • Visalia, CA 93292
www.visaliaidea.com

**Vehicle Wraps • Fleet Decals
Banners • Floor Graphics
Trade Show Displays
Designs with Purpose**

Region XI Executive Director's Message

David Tonini



Greetings Region 11 A.C.S.A. Members,

It is a pleasure to serve as your Executive Director. Region 11 covers five counties and it is my responsibility to support you. I look forward to doing that again this year. I continue to be impressed with school leaders in our Region as I travel to meetings in Inyo, Mono, Kern, Kings and Tulare counties.

As you start the school year, I want to congratulate you on being a member of the Association of California School Administrators. You recognize that A.C.S.A. membership:

- Provides you access to the expertise of an extensive network of educational leaders

- Provides professional support and liability insurance in times of fiscal instability

- Gives you valuable news, research and information as well as discounted registration rates for professional development

- Gives you a strong political voice for the rights of school administrators

Your President Tom Addington and your other Region Leaders have been developing plans and implementing the following strategies:

- To Make Region 11 school leaders the ones sought out by legislators when they are writing bills related to education

- To be the premier provider of professional development opportunities

- To provide a variety of opportunities for school leaders to network with each other

Important information is included in this handbook, put together by your Newsletter/Handbook Editor Dick Schlagel, such as the names and contact information for your Region Officers and Region Representatives to State Committees and Councils, meeting dates, and professional development opportunities. Take time to survey the handbook's content and use it as a resource throughout the year.

I would like to encourage you to attend a Charter or Region Meeting, They are open to all A.C.S.A. members. We would like to hear your voice on critical issues. In addition, I would recommend that you join the online A.C.S.A. Community for support from school leaders statewide and to provide support for all of them.

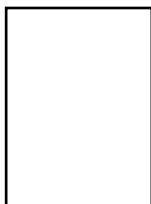
If can be of any assistance in your role as an educational leader, please call me at 559 280 6228 or email me at davidto02@comcast.net. I look forward to supporting all of you again this year.

David Tonini
Executive Director
Region 11 A.C.S.A.

Council Representatives for Region XI

2013 - 2014

Adult Education
2014



Terri Nuckols, Principal
Delano JUHSD
1811 Princeton Street
Delano, CA 93215
W (661) 720-4170 F (661) 725-5852
tnuckols@djuhsd.org

Business Services
2015



Robert Groeber, Assistant Superintendent
Visalia USD
5000 W. Cypress
Visalia, CA 93277
W (559) 730-7529 F (559) 730-7346 H (559) 561-4477
rgroeber@vusd.org

Career Technical
2014



Laura Hickie, Coordinator, Special Projects
Sierra Sands USD
113 Felspar
Ridgecrest, CA 93555
W (760) 499-1642 Fax (760) 375-1959
C (760) 977-0460 lhickie@ssusd.org

Classified Educational Leaders
2014



Micaela Rodriguez, Administrative Assistant
Cutler-Orosi JUSD
12623 Avenue 416
Orosi, CA 93647
W (559) 528-4763 x1008 F (559) 528-9319
H (559) 564-2391 C (559) 246-5520
mrivera@cojUSD.org

Curriculum, Instruction & Accountability
2014



Cinee Rael, Coordinator Central UESD
15783 18th Avenue
Lemoore, CA 93245
W (559) 924-3405
cinder@central.k12.ca.us

Educational Options
2013



Warcester Williams, Administrator, Division of Student Services
Kern COE
1300 17th Street, City Centre
Bakersfield, CA 93301
W (661) 636-4346 F (661) 636-4127 H (661) 345-3454
C (661) 345-3454 wawilliams@kern.org

Elementary Education
2014



Deanna Clarke, Principal
Endeavour Elementary
Fruitvale School District
9300 Meachan Rd,
Bakersfield, CA 93312
W (661) 588-3553 C (661) 201-0906
declarke@fruitvale.k12.ca.us

Human Resources
2015



John Rodriguez, Director, HR
Tulare COE
P.O. Box 5091
Visalia, CA 93278
W (559) 733-6306 F (559) 627-4670
jrodriguez@tcoe.org

**Middle Grades
Education**
2014



Clara Finneran, Principal
Sierra Sands USD
James Monroe Middle School
340 W Church St.
Ridgecrest, CA 93555
W (760) 499-1830 Fax (760) 375-8781 H (760) 447-6140
cfinneran@ssusd.org

Secondary Education
2014



Fernie Marroquin, Principal
Redwood High School
1001 W Main St
Visalia, CA 93291
W (559) 730-7367 Fax (559) 730-7744
fmarroquin@vusd.org

**Student Services and
Special Education**
2013



Scott Chennault, Coordinator of Central USD
15783 18th Avenue
Lemoore, CA 93230
W (559) 924-3405 x2616 Fax (559) 924-1412 C (559) 816-1047
schennau@central.k12.ca.us

**Superintendency
Council**
2014



Craig Wheaton, Superintendent
Visalia USD
5000 W. Cypress Ave.
Visalia, CA 93277
W (559) 730-7522 F (559) 730-7508
cwheaton@vusd.org

**Assessment &
Representative
Cur, Instruction and
Accountability**



Craig Wheaton, Superintendent
Visalia USD
5000 W. Cypress Ave.
Visalia, CA 93277
W (559) 730-7522 F (559) 730-7508
cwheaton@vusd.org

**ACSA/ Xerox Alliance
State Appointed**



Kevin Silberberg, Superintendent
Panama Buena Vista School District
1200 N Chester Avenue
Bakersfield, CA 93308
W (661) 392-2110 Fax (661) 392-0681
ksilberb@standard.k12.ca.us

Committee Representatives for Region XI

2012 - 2013

Co-Administration 2013



Courtney Kirchman, Assistant Principal
Central UESD - Akers Elementary School
P.O. Box 1339
Lemoore, CA 93245
W (559) 998-5707 F (559) 998-7517
ckirchman@central.k12.ca.us

Equity Achievement & Diversity 2013



Dr. Sarah Koligian, Superintendent
Tulare JUHSD
426 North Blackstone
Tulare, CA 93274
W (559) 688-2021 Fax (559) 687-7317 C (559) 288-4122
sarah.koligian@tulare.k12.ca.us

Legislative Policy 2014



Jose Morales, Director of Migrant Education
Kern County Office of Education
1300 17th Street
Bakersfield, CA 93301
W (661) 636-4779 Fax (661) 636-4781
H (661) 665-2774 C (661) 706-4647
jomorales@kern.org

Member Services 2013



Jeffrey Vandernooy, Principal
Valley Oaks Charter School - Kern COE
3501 Chester Avenue
Bakersfield, CA 93301
W (661) 852-6752 F (661) 633-5287 H (661) 859-6725
C (661) 859-6725 jvandernooy@kern.org

Retirement 2015



Bill Black, Retired
19095 Fremont Avenue
Lemoore, CA 93245
C (559) 318-0260
lemore.black@gmail.com

Small School District 2013



Kerry Beauchaine, Superintendent/ Principal
Oak Valley Elementary School District
24500 Road 68, Tulare, CA 93274
W (559) 688-2908 Fax (559) 688-8023
C (559) 903-8546
kerry.beauchaine@oakvalley.k12.ca.us

SOUTHWEST SCHOOL & OFFICE SUPPLY



Stationery, Paper, Furniture & Art

**"Taking Care of School
Needs since 1976"**

Joe De La Cruz

1915 N. MACARTHUR DR. , STE 400

TRACY, CA 95376

(800) 289-0268

TEL: (209) 839-2222

CELL: (559) 410-0790

FAX: (209) 836-0268

EMAIL: delacruz@southwestschool.com

2013 - 2014 Calendar

Region XI, The Charters, State Activities / Events

August 2013

30	Kings Charter Board Meeting, Kings County Office of Education, Lemoore	7:00 am
----	--	---------

September 2013

13	Tulare Charter Board, Apple Annies, Tulare	7:00 am
19	West Kern Charter Board... Nodels, Bakersfield	7:00 am
19	Regional XI Delegate Assembly, Hodels, Bakersfield	8:00 am
20	Kings Charter Board Meeting, Kings County Office of Education, Lemoore	7:00 am
26	Kings Charter Annual Fall Conference, Pioneer School District, Hanford, Corner Fling & Country	4:30 pm

October 2013

7	East Kern Charter Meeting, Tehachapi, TBD	5:30 pm
10	State Delegate Assembly, Los Angeles	7:00 am
11	Tulare Charter, Apple Annies, Tulare	7:00 am
14	Inyo/Mono Charter Board Bishop	5:30 pm
18	Kings County Charter Board Meeting, Kings Co. Office of Education, Lemoore	7:00 am
19	Region XI Annual Fall Conference CUE, CSUB, Bakersfield	8:00 am
24	West Kern Charter Board, Hodels	7:00 am
24	Region XI Board Meeting, Hodels, Bakersfield	8:00 am
29	Kings County Charter Retirees Breakfast, Vinyard Inn, Lemoore	8:30 am

November 2013

1	Tulare Charter, Apple Annies, Tulare	7:00 am
5	East Kern Charter, Tehachapi	5:30 pm
6-9	State ASCA Leadership Summit, San Jose, CA	
15	Kings County Charter Board Meeting, Kings Co. Office of Education, Lemoore	7:00 am
19	Tulare County Charter Retirees Breakfast, Apple Annies, Tulare	8:30 am
21	West Kern Charter Board Meeting, Hodels, Bakersfield	7:00 am
21	Region XI Board Meeting, Hodels, Bakersfield	8:00 am

December 2013

2	East Kern Charter Meeting, Bernardinos, Inyo Kern	5:30 pm
19	Region XI Board Meeting, Video Confrence, Charter Sites TBD	8:00 am
20	Kings County Charter Board Meeting, Kings Co. Office of Education, Lemoore	7:00 am

January 2014

10	Tulare Charter, Apple Annies, Tulare	7:00 am
17	Kings County Charter Board Meeting, Kings Co. Office of Education, Lemoore	7:00 am
23	West Kern Charter Board, Hodels, Bakersfield	7:00 am
23	Region XI Delegate Assembly, Hodels, Bakersfield	8:30 am

February 2014

13	West Kern Charter Board Meeting, Hodels, Bakersfield	7:00 am
14	Tulare Charter, Apple Annies, Tulare	7:00 am
20	State Delegate Assembly, Location TBD	
20	Region XI Board Meeting, Hodels, Bakersfield	8:30 am
21	Kings County Charter Board Meeting, Central Union School District	12:00 pm
TBD	West Kern Charter Annual Golf Tournament, Location TBD	TBD

March 2014

3	East Kern Charter Meeting, Tehchapi, TBD	7:00 am
14	Tulare Charter, Apple Annies, Tulare	7:00 am
20	West Kern Charter Board Meeting, Hodels, Bakersfield	7:00 am
20	Region XI Board Meeting, Hodels, Bakersfield	8:00 am
21	Kings County Board Meeting, Kings Co. Office of Education, Lemoore	7:00 am
TBD	Tulare County Charter Annual Spring Conference	TBD

April 2014

6-7	Legislative Action Day, Sacramento	
10	West Kern Charter, Hodels, Bakersfield	7:00 am
10	Region XI Board Meeting, Hodles, Bakersfield	8:00 am

April 2014 (continued)

11	Tulare Charter, Apple Annies, Tulare	7:00 am
23	West Kern Administrative Assistant's Luncheon, Stars Theater, Bakersfield	11:30 am
25	Kings County Charter Board Meeting, Kings Co. Office of Education, Lemoore	7:00 am
TBD	Tulare County Charter ESS Breakfast	7:00 am
TBD	Kings County Administrative Assistant's Luncheon	TBD

May 2014

1	West Kern Charter Board Meeting, Hodels, Bakersfield	7:00 am
1	Region XI Delegate Assembly, Hodels, Bakersfield	8:30 am
1	Region XI Annual Awards Luncheon, Hodels, Bakersfield	12:00 am
3	East Kern Charter Meeting, Indian Wells Valley Lodge	5:30 pm
8	State Delegate Assembly, Scaramento	
9	Tulare Charter, Apple Annies, Tulare	7:00 am
16	Kings County Charter Board Meeting, Kings Co. Office of Education, Lemoore	7:00 am
TBD	Kings County Charter Election, End of Year Social and Awards	4:00 pm
TBD	Tulare County Charter Annual Recognition/Retirement Dinner	TBD
TBD	Tulare County Charter Annual Golf Tournament	TBD

June 2014

5	West Kern Charter Annual Awards Dinner, Rio Bravo, Bakersfield	5:30 pm
17	Region XI Planning Retreat, Central Union School District, Lemoore (Executive Board)	1:00 pm
18	Region XI Planning Retreat, Central Union School District, Lemoore (Region Board, Council and Committee Reps)	8:00 am
18	Tulare Charter Board, Edison Ag-TOC, Tulare	7:00 am
18	Tulare Office of Education/ACSA Annual Summer Institute, Edison Ag-TOC, Tulare	8:00 am

Region XI Newsletter. Handbook Deadlines

Issue	News Deadline	Email/ Website
Fall 2013	September 30, 2013	October 30, 2013
Winter 2013-14	December 15, 2013	January 30, 2014
Spring 2014	March 1, 2014	April 1, 2014
Summer 2014	May 30, 2014	June 30, 2014
Handbook 2013-2014	June 30, 2014	September 30, 2014

Charter Planning Meetings for 2014-2015

	<i>Charter</i>	<i>Date</i>	<i>Time</i>	<i>Location</i>
1.	East Kern			
2.	West Kern			
3.	Kings			
4.	Tulare			
5.	Inyo/Mono			



Owner
Barbara Ferrante

661
822-6015



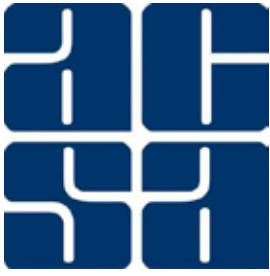
213 South Curry Street, Tehachapi Ca 93561

661 **822-6015**

fax **822-6092**

Thank you for your patronage

email: barbara@jakessteakhouse.net
visit on the web at www.jakessteakhouse.net



EAST KERN CHARTER

Melissa Christman



President

Mrs. Melissa Christman

Principal, Faller Elementary School
Sierra Sands USD
1500 W. Upjohn St.
Ridgecrest, CA 9355
W (760) 499-1690 C (760) 499-1695 C (760) 608-2180
mchristman@ssusd.org

Vice President

Paul C. Press

Principal, TUSD Alternative Education
Monroe High, Continuation High School
126 South Snyder Avenue
Tehachapi, CA 93561
W (661) 822-2124 F (661) 822-2188 C (661) 717-7221
ppress@teh.k12.ca.us

Secretary

Jo Anne McClelland

Assistant Principal, Burroughs High School
506 E. French Ave.
Ridgecrest, CA 93555
W (760) 499-1800 F (760) 375-1735
jmcclelland@ssusd.org

Treasurer

Mrs. Elaine Janson

Assistant Superintendent for Business Services
Sierra Sands Unified School District
113 Felspar Ave.
Ridgecrest, CA 93555
W (760) 499-1604 F (760) 375-4562
ejanson@ssusd.org

Director

Paul C. Press

Principal, TUSD Alternative Education
Monroe High, Continuation High School
126 South Snyder Avenue
Tehachapi, CA 93561
W (661) 822-2124 F (661) 822-2188 C (661) 717-7221
ppress@teh.k12.ca.us



INYO/BODIE CHARTER



Don Clark

President

Don Clark

Superintendent/Principal
Eastern Sierra
Unified School District
PO Box 575
Bridgeport, CA 93517
(760)932-7443
dclark@esusd.org

Treasurer

Joel Hampton

Superintendent/Principal
Owens Valley Superintendent
of Schools
PO Drawer E
202 South Clay Street
Independence, CA 93526
760-878-2405
jhampton@ovusd.k12.ca.us

Vice President

Victor Hopper

Superintendent
Lone Pine
Unified School District
301 South Hay Street,
Lone Pine, CA 93545
760-876-5579
vhopper@lpusd.k12.ca.us

Past President

Joel Hampton

Owens Valley Superintendent
of Schools
Superintendent/Principal
PO Drawer E
202 South Clay Street
Independence, CA 93526
760-878-2405
jhampton@ovusd.k12.ca.us

Secretary

Rosanne Lampariello

Principal
Mammoth
Unified School District
1601 Meridian Boulevard
Mammoth Lakes, CA 93546
(760) 934-6802
rlampariello@mammothusd.org

Director

TBD



KINGS CHARTER

Dr. Robert Hudson



President:

Rob Hudson

Superintendent
Alpaugh USD
PO Box 9
Alpaugh, CA 93201
559-949-8413
C 559-786-9140
robh@alpaugh.k12.ca.us

Secretary:

Antoinette Draxler

Director of Learning
Support Services
Pioneer Union School Dist.
1888 N. Mustang Drive
Hanford, CA 93230
draxlera@puesd.k12.ca.us

Past President:

Heiko Sweeney

Principal
Akers School
15783 18th Avenue
Lemoore, CA 93245
559-998-5707
hsweeney@central.k12.ca.us

Treasurer:

Ben Luis

Principal
Cinnamon Elementary
Lemoore, CA 93245
559-924-6870
enluis@luesd.k12.ca.us

President Elect:

Greg Henry

Principal
Pioneer Middle School
101 W. Pioneer Way
Hanford, CA 93230
559-584-0112
henryg@puesd.k12.ca.us

Regional Director:

Heiko Sweeney

Principal
Akers School
15783 18th Avenue
Lemoore, CA 93245
559-998-5707
hsweeney@central.k12.ca.us

Vice President:

Bobby Peters

Coordinator C, I, &A
Hanford JUHSD
559-583-5903 ext. 3105
bpeters@hjuhsd.k12.ca.us

Board Member:

Carmen Barnhart

Assistant Superintendent
Educational Services
1144 W Lacey Boulevard
Hanford, CA 93230
559-589-7089
cbarnhart@kings.k12.ca.us

BOARD OF DIRECTORS

Board Member:

Barbara Zaino

Assistant Superintendent/HR
and Sp. Education
Kings County Office of Education
1144 W Lacey Blvd.
Hanford, CA 93239
559-589-7094
bzaino@kingscoe.org

Board Member:

Judy Horn

Principal
Tamarack Elementary
Reef-Sunset USD
1000 Union Ave.
Avenal, CA 93204
559-386-4051
jhorn@rsusd.net

Board Member:

Dale Ellis

Superintendent/Principal
Lakeside EUSD
9100 Jersey Ave.
Hanford, CA 93230
559-582-7638 ext. 101
dellis@kings.k12.ca.us

Board Member:

Xavier Pina

Principal
Parkvie Middle School
Armona USD
PO Box 368
Armona, CA 93202-0368
559-583-5020
xpina@kings.k12.ca.us

Board Member:

Ken Horn

Principal
Avenal Elementary School
Reef-Sunset USD
559-386-5173 ext. 3065
khorn@rsusd.net

Ex Officio Board Member:

County Superintendent

Tim Bowers

Superintendent
Kings County Office of Education
1144 W Lacey Boulevard
Hanford, CA 93230
559-584-1441
Tbowers@kings.k12.ca.us

Ex Officio Member and Region XI

Retired Members Committee

Representative:

Bill Black

Retired ACSA Member
19095 Fremont Avenue
Lemoore, CA 93245
559-924-9683
Lemoore.black@gmail.com

Ex Officio Board Member:

Immediate Past Charter President

Heiko Sweeney

Principal
Akers School
15783 18th Avenue
Lemoore, CA 93245
559-998-5707
hsweeney@central.k12.ca.us

Regional, Local, and State Reps:

Regional Director

Heiko Sweeney

Principal
Akers School
15783 18th Avenue
Lemoore, CA 93245
559-998-5707
hsweeney@central.k12.ca.us

Regional, Local, and State Reps:

Student Services SPED Council

Scott Chennault

Coordinator of Special Services
Special Education and Technology
Central Union SD
15783 18th Ave.
Lemoore, CA 93245
559-924-3405
schennau@central.k12.ca.us

Regional, Local, and State Reps:

Curriculum and Instruction Council

Cindee Rael

Coordinator of C&I
Central Union SD
15783 18th Avenue
Lemoore, CA 93245
559-924-3405
crael@central.k12.ca.us

Regional, Local, and State Reps:

Regional President

Tom Addington

Superintendent
Central Union SD
15783 18th Avenue
Lemoore, CA 93245
559-924-3405
darthhr@me.com

Courtney Kirchman

Assistant Principal
Akers Elementary School
Central UESD
P.O. Box 1339
Lemoore, CA 93245
W 559-998-5707
F 559-998-7517
ckirchman@central.k12.ca.us



TULARE CHARTER

Laura Haston



President

Lora Haston

Alta Vista Elementary School
Superintendent-Principal
2293 E. Crabtree Ave.
Porterville, California 93257
W (559) 782-5700 Fax (559) 782-5715
lhaston@alta-vista.k12.ca.us

President Elect

Donya Wheeler

Lincoln Elementary School
Principal
333 South "D" Street
Exeter, California 93221
W (559) 592-2141 Fax (559) 592-5249
dwheeler@exeter.k12.ca.us

Vice President

Robert Groeber

Assistant Superintendent
Visalia Unified School District
5000 W. Cypress
Visalia, CA 93277
W 559/730-7300 Fax 559/730-7559
rgroeber@vusd.org

Secretary

Tom Rooney

Superintendent
Lindsay Unified School District
371 E. Hermosa
Lindsay, CA 93247
W 559/562-5111 Fax 559/562-4637
trooney@lindsay.k12.ca.us

Treasurer

Lucy Van Scyoc

Tulare Joint Union High District
824 W. Maple
Tulare, California 93274
W (559) 686-7400 Fax (559) 687-7389
lucy.vanscyoc@tulare.k12.ca.us

Past President

Frank Silveira

Exeter Union High
Principal
505 Rocky Hill Drive, Exeter, California 93221
W (559) 592-2127 Fax (559) 592-3539
fsilveira@exeter.k12.ca.us

BOARD OF DIRECTORS

Steve Tsuboi

Sunnyside Union Elementary School
Superintendent-Principal
21644 Avenue 196
Strathmore, California 93267
W (559) 568-1741 ext. 207
Fax (559) 568-0291
stsuboi@sunnyside.k12.ca.us

Dr. Jeremy Powell

Bartlett Middle School
Principal
335 North G Street
Porterville, CA 93257
W 559/782-7100 Fax 559/784-3432
powell@portervilleschools.org

Dr. Carolyn Kehrli

Superintendent
Cutler-Orosi
Joint Unified School District
12623 Avenue 416
Orosi, CA 93647
W 559/528-4763 FAX 559/528-3132
ckehrli@cojUSD.org

Tim Hire

Superintendent
Exeter Public Schools
134 South E Street
Exeter, CA 93221
W 559/592-9421 FAX 559/592-9445
thire@exeter.k12.ca.us

Val Brown

Principal
Maple School
640 W. Cross
Tulare, CA 93274
W 559/685-6270 FAX 559/685-7337
vbrown@tcsd.k12.ca.us

Dr. Clare Gist

Assist Superintendent, Business
Tulare City School District
600 N. Cherry
Tulare, CA 93274
559/685-7200 Fax 559/685-7248
cgist@tcsd.k12.ca.us

Kerry Beauchaine

Superintendent
Oak Valley Union School District
24500 Road 68

Tulare, CA 93274

W 559/688-2908 FAX 559/688-8023
kerry.beauchaine@oak-valley.k12.ca.us

Dr. John Snavelly

Superintendent
Porterville Unified School District
600 W. Grand Ave
Porterville, CA 93257
W 559/793-2400 FAX 559/793-1088
jsnavelly@portervilleschools.org

Dr. Craig Wheaton

Superintendent
Visalia Unified School District
5000 W. Cypress
Visalia, CA 93277
W 559/730-7300 Fax 559/730-7559
cwheaton@vusd.org

Dr. Fernie Marroquin

Principal
Redwood High School
1001 W. Main
Visalia, CA 93291
W 559/730-7367 Fax 559/730-7741
fmarroquin@vusd.org

Terri Rufert

Superintendent
Sundale Union School District
13990 Avenue 240
Tulare, CA 93274
W 559/688-7451 Fax 559/688-5905
terri.rupert@sundale.org

Dr. Guadalupe Solis

Assistant Superintendent
TCOE
2637 Burrell
Visalia, CA
W 559/733-6328 C 559/288-9708
H 559/924-4107
gsolis@tcoe.org

Dr. Sarah Koligian

Superintendent
Tulare Joint Union High
School District
426 N. Blackstone
Tulare, CA 93274
W 559/688-2021 Fax 559/687-7317
sarah.koligian@tulare.k12.ca.us

Phillip Pierschbacher

Director of Personnel
Tulare City School District
600 N. Cherry
Tulare, CA 93274
W 559/685-7200 Fax 559/685-7248
ppierschbacher@tcsd.k12.ca.us

Jana Freeman (Carter)

Principal
Royal Oaks
1323 Clover Drive
Visalia, CA 93277
W 559/730-7787 Fax 559/730-7844
jfreeman@vusd.org

Michaela Rodriguez

Administrative Secretary
Cutler-Orosi Joint Unified School
District
12623 Avenue 416
Orosi, CA 93647
W 559/528-4763 Fax 559/528-3132
mrivera@cojUSD.org

Mimi Bonds

Visalia Unified School District
Coordinator of Student Services
5000 W. Cypress Avenue
Visalia, California 93277
W (559) 730-7385 Fax (559) 735-8079
mbonds@vusd.org

Jim Vidak

County Superintendent of Schools
Tulare County Office of Education
P. O. Box 5091
Visalia, CA 93278
W 559/733-6300 Fax 559/737-4378
jimv@tcoe.org

John Rodriguez, Director, HR

Tulare COE
P.O. Box 5091
Visalia, CA 93278
W (559) 733-6306 F (559) 627-4670
jrodriguez@tcoe.org



WEST KERN CHARTER



Matt Diggle

President: **Matt Diggle**, Principal
Endeavour Elementary
Fruitvale School District
9300 Meachan Rd., Bakersfield, CA 93312
W (661) 588-3550 F (661) 587-9318
madiggle@fruitvale.k12.ca.us

Vice President: **Richard Morosa**, Assitant Principal
Wingland School
Bakersfield, CA 93308
Standard School District
W (661) 392-2125 F (661) 392-2139
C (661) 345-5000
rmorosa@standard.k12.ca.us

Membership: **Kim Carlson**, Assistant Principal
Fruitvale School District
9300 Meachan Rd,
Bakersfield, CA 93312
W (661) 588-3550 C (661) 537-9318
H (661) 324-0055
kcarlson@fruitvale@k12.ca.us

Treasurer: **Kathy Kouklis**, Assist. Superintendent
Arvin Union School District
737 Bear Mt. Blvd., Arvin, CA 93203
W (661) 854-6512 F (661) 854-2362
H (661) 665-0853 C (661) 903-1026
kouklis@arvin-do.com

Secretary: **Jeffrey vandernoor**, Principal
Valley Oaks Charter School - Kern COE
3501 Chester Avenue
Bakersfield, CA 93301
W (661) 852-6752 F (661) 633-5287
H (661) 859-6725 C (661) 859-6725
jvandernoor@kern.org

Past President: **Deanna Clarke**,
After School Program Coordinator
Bakersfield City School District
1300 Baker Street, Bakersfield, CA 93305
W (661) 631-4640 F (661) 861-1787
C (661) 201-0906
clarked@bcsd.com

Representatives: **Gerrie Kincaid**, Assistant Superintendent,
Educational Services
Panama Buena Vista School District
4200 Ashe Rd.
Bakersfield, CA 93313
W (661) 831-8331 F (661) 398-2141
C (661) 665-2291 C (661) 858-3650
gkincaid@pbvUSD.net

Representatives: **Chris Crawford**, Superintendent
Greenfield Union
1024 Fairview Rd., Bakersfield, CA 93313
W (661) 837-6000 F (661) 238-5103
C (661) 831-2983
crawford@pbvUSD.net

Representatives: **Ron Bryant**, Superintendent
Taft City School District
W (661) 763-1521 F (661) 763-1495
rbryant@taftcity.org

Representatives: **Nancy Olcott**, Director,
Learning Support
Bakersfield City School District
1300 Baker St., Bakersfield, CA 93305
W (661) 631-4641 F (661) 631-4623
olcott@bcsd.com

Representatives: **Mary Westendorf**, Superintendent
Fruitvale School District
7311 Rosedale Hwy.,
Bakersfield, CA 93308
W (661) 589-3830 ext. 206
F (661) 589-3614
mawestendorf@fruitvale.k12.ca.us

Representatives: **Tony Gisbertz**, Principal
Highland Elementary
Standard School District
2900 Barnett St., Bakersfield, CA 93308
W (661) 392-2115 F (661) 392-2142
H (661) 393-2158 C (661) 978-9244
tgisbertz@standard.k12.ca.us

**Region XI
Board Director:** **Matt Torres**, Assist. Superintendent
Fruitvale School District
7311 Rosedale Hwy.
Bakersfield, CA 93308
W (661) 589-3830 F (661) 589-3614
matorres@fruitvale.k12.ca.us

WEST KERN CHARTER

Member: **Angie Bertran Harris**, Principal
KCSDS
Richardson Child Development Center.
Deaf and Hard of Hearing
1515 Feliz Dr., Bakersfield, CA 93307
W (661) 336-5409 F (661) 832-8437
C (661) 317-2771 H (661) 317-2771
anbertran@kern.org

Member: **Abigal Rattay-Miller**, Vice Principal
KCSDS
Richardson Child Development Center.
Deaf and Hard of Hearing
1515 Feliz Dr., Bakersfield, CA 93307
W (661) 336-5402 C (661) 472-4474
rattay@gmail.com

Past State Board Director: **Dr. Carl Olson**, Associate Professor
Point Loma Nazarene University
780 Hollytree Lane, Wasco, CA 93280
W (661) 321-3480 C(661) 201-0923
olson1@gmail.com

Member: **Susan Andreas-Bervel**,
Assist. Superintendent
Wasco Elementary
639 Broadway Ave., Wasco, CA 93280
W (661) 758-7100 C (661) 978-1188
sandreas@wuesd.org

Member: **Regina M. Green**, Principal
Wasco Union Elementary
Thomas Jefferson
5718 Stacey St., Bakersfield, CA 93313 (home)
W (661) 978-283 C (661) 213-7291
rgreen@wuesd.org

Member: **Brad Maberry**, Principal
Wasco Elementary
639 Broadway Ave., Wasco, CA 93280
W (661) 758-7130
brmaberry@wuesd.org

Member: **Steffanie Penuberton**, AP/LD
Wasco Union Elementary
10171 Palm Avenue, Wasco, CA 93280
W (661) 758-7130 C (661) 321-6250
H (661) 82-5631
stpenuberton@wuesd.org

Region XI

Board Director: **Diane Cox**, Assistant Superintendent
Bakersfield City School District
1300 Baker St., Bakersfield, CA 93305
W (661) 631-4856 F (661) 324-3274
C (661) 979-8544
coxd@bcsd.com

Region XI

President-Elect: **Blanca Cavazos**, Superintendent
Taft Union Highschool District
Wildcat Way, Taft, CA 93268
W (661) 763-2300 H (661) 873-8534
C (661) 330-3300
bcavazos@taft.k12.ca.us

Region XI

Representative

Legislative Policy: **Jose Morales**, Director of Migrant
Education
Kern County Office of Education
1300 17th Street
Bakersfield, CA 93301
W (661) 636-4779 Fax (661) 636-4781
H (661) 665-2774 C (661) 706-4647
jomorales@kern.org

Region XI

Board Director: **Danyel Kelly**, Principal
Fruitvale School District
Discovery Elementary
7500 Vaquero Ave, Bakersfield, CA 93308
W (661) 589-7336 F (661) 587-9413
H (661) 201-0917 C (661) 201-0917
gsolis@tcoe.org



PROTECTING WHAT MATTERS TO YOU

YOUR HOME, YOUR FAMILY, AND YOUR FUTURE.

Buckman-Mitchell Insurance is proud to have protected schools, businesses and families since 1916.

As an independent agency, with over 80 licensed insurance professionals, Buckman-Mitchell is ready to help with the best possible rates on:

- Health and life insurance
- Long-term disability
- Auto and home
- Business and agribusiness

And, expertise in retirement planning and investments.

BUCKMAN-MITCHELL, INC.
FINANCIAL & INSURANCE SERVICES
ESTABLISHED IN 1916

500 N. Santa Fe, Visalia | California License #0A96361 #0011334 | 559 733-1181 | bminc.com

*Discount auto insurance
for ACSA members only.*

*Protecting America's
educators for over 50 years.*



*Low rates exclusively for
ACSA members like you.*

As a member of ACSA-Region XI, you qualify for A+ Auto & Home Insurance Plus, provided by California Casualty.

It's an outstanding plan with discount rates
negotiated just for you.

For over 50 years, A+ has been creating unique plans for educators. We offer the benefits you need at rates you can afford. You could save hundreds of dollars each year. Call today!

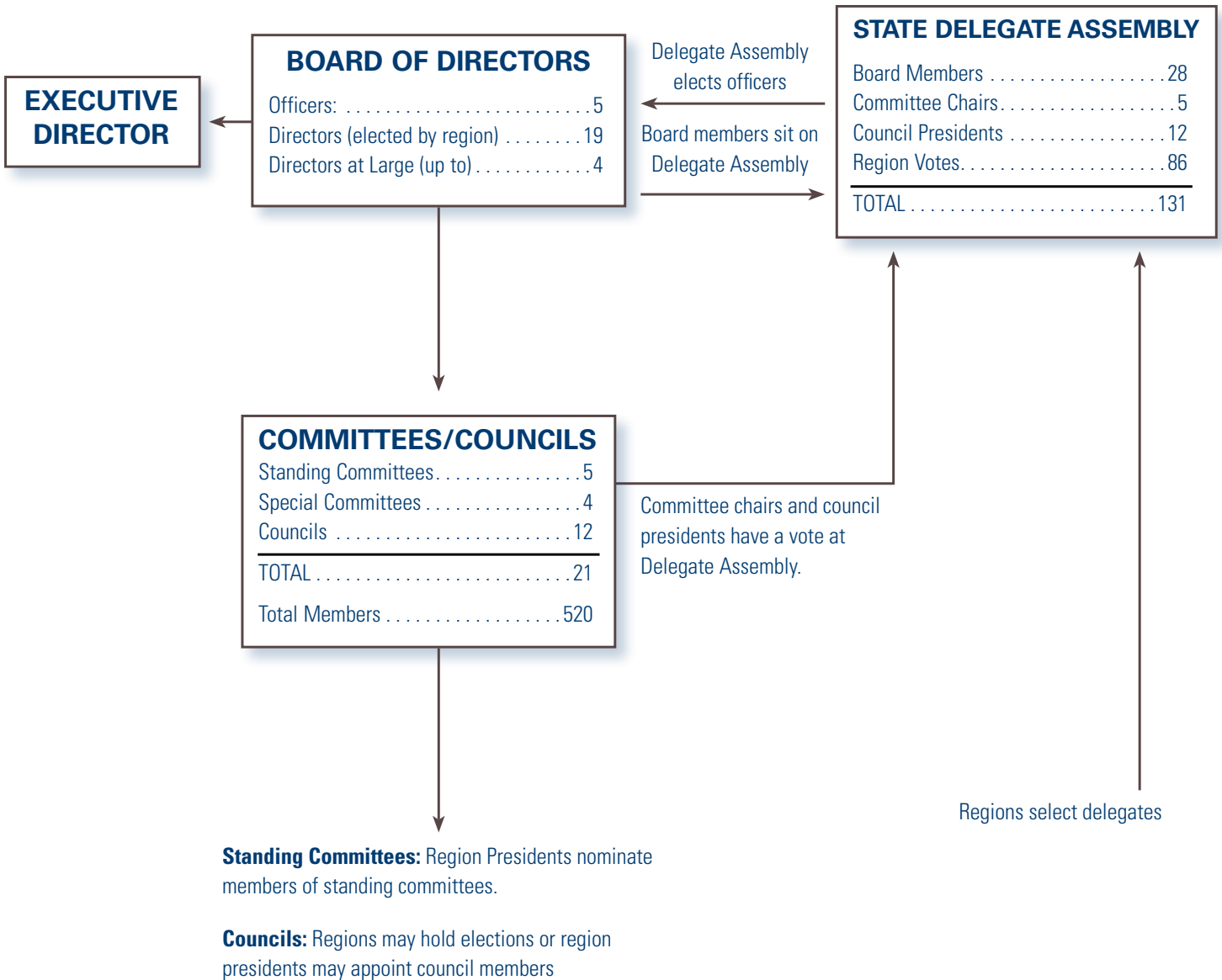
**Call today for a free quote,
toll-free: 1-888-744-9717.**



www.APlus.com

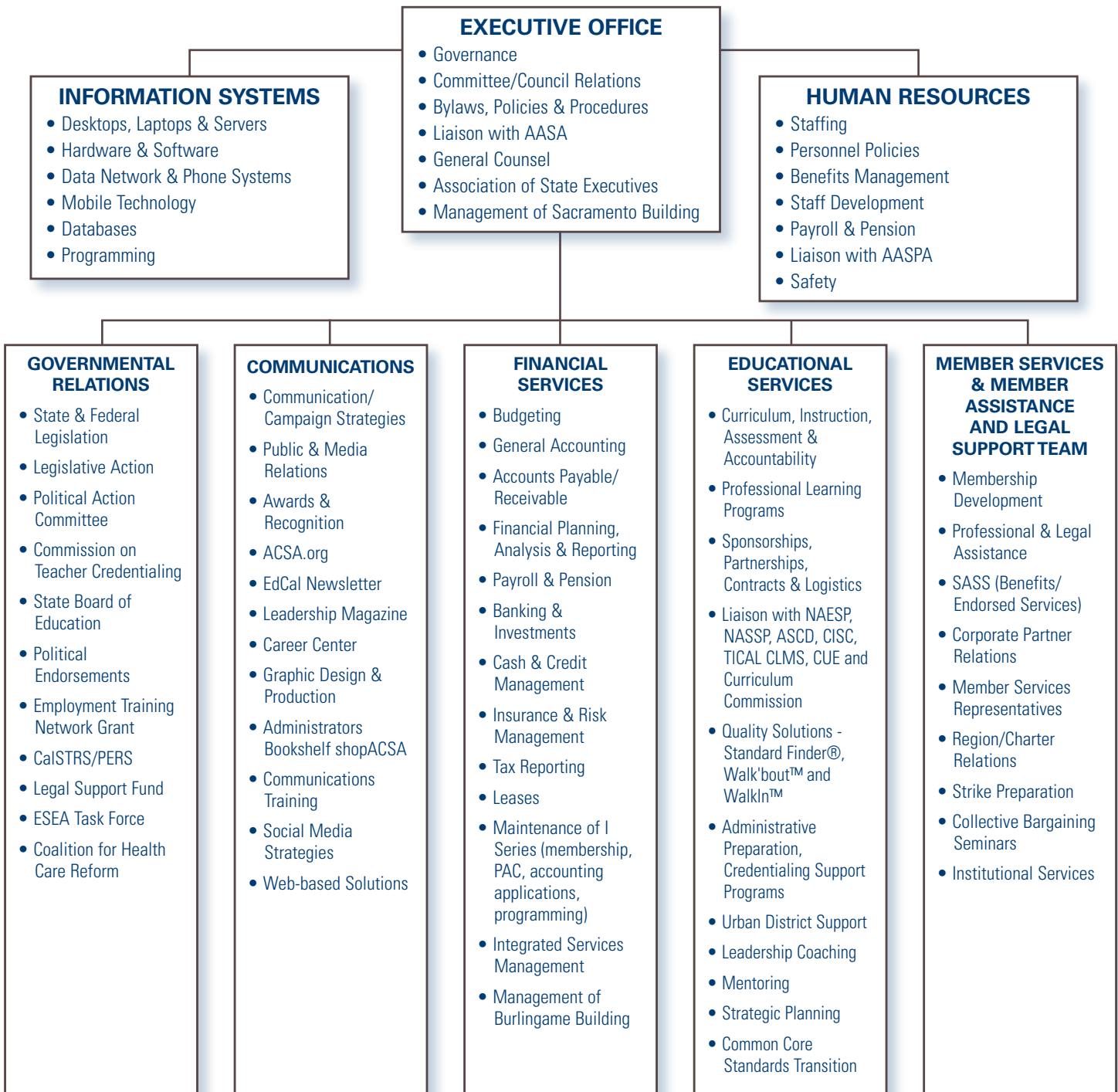


how state acsa works





organization chart



Note: All departments have committee/council liaison responsibilities.

HR 3/13

Highly Accalimed Country Dining



The Hodel Family has been serving Bakersfield for over 35 years. Hodel's Country Dining is a restaurant which has been applauded for its charming atmosphere, wonderful award-winning food and heavenly homemade desserts and breads. Visit Hodel's and rediscover food prepared the "old fashioned" way.



5917 Knudsen Drive • Bakersfield, CA

(661) 399-3341

Restaurant • Banquet Rooms • Catering • Homemade Baked Breads & Desserts



KERN TROPHIES



2015 "F" STREET - BAKERSFIELD, CA. 93301

"Awards for Champions"

FAMILY OWNED & OPERATED
Ira and Mary Sullivan
Christy Garnas (McCoy)

BUILD YOUR OWN TROPHY
www.kerntrophies.com

(661) 324-9265

FAX (661) 324-1209

Hours: 8:30 - 5:00 - Monday thru Friday



10 tips

for getting the most out of ACSA online



1 Strengthen your skills. Check the professional learning center and calendar of events to see the upcoming programs ACSA offers and find quick links to registration materials.
www.acsa.org/professionallearning

2 Promote your career. Use the Career Center job search and career development section to post a resume, view job openings and find useful career resources.
careers.acsa.org

3 Advocate for your schools with Action Alerts, a quick and easy way to access the most current information on ongoing legislation and budget updates, and learn how to contact your legislator.
www.acsa.org/advocacy

4 Protect your rights. Connect with ACSA's Member Assistance & Legal Support Team, which has a proven record of resolving work-related concerns before the issues become a lawsuit. The team's extensive expertise is available only to ACSA members.
www.acsa.org/legalassistance

5 Connect with colleagues. Become a part of the ACSA members-only online community to communicate directly with your colleagues, join discussions, ask questions and make valuable contacts locally and statewide.
community.acsa.org

6 Build your networks. Quickly link to your region website to find local contacts, events and networking opportunities, and find best practices for your job-alike by connecting with ACSA's committees, councils and groups.
www.acsa.org/regions ■ www.acsa.org/about

7 Find a mentor. ACSA's mentoring and coaching programs offer a one-on-one approach to professional development. A mentor can help define your role as an educational leader, provide ongoing support and help build your network.
www.acsa.org/mentoring

8 Personalize your experience with My ACSA. When you log in to the ACSA homepage, you can access members-only online versions of EdCal, Leadership Magazine and the Leadership Directory, as well as other members-only information and helpful FAQs.
www.acsa.org/myacsa

9 Learn from your laptop. ACSA's online professional learning programs offer quality webinars and trainings on topics including Common Core Standards, budgeting, cyber ethics and legal issues, all without leaving your office.
www.acsa.org/onlinelearning

10 Celebrate school leadership. ACSA's Awards Program allows you to recognize the excellence of your colleagues and local programs, while Every Student Succeeding honors students who have overcome overwhelming challenges.
www.acsa.org/awards