

# REGION XI HANDBOOK



**Association of  
California  
School  
Administrators**

**2012-2013**



# ACSA Region XI Handbook 2012 - 2013 Table of Contents

Region XI Website and our Advertisers	3
State ACSA Offices and Services	5
Region XI President's Message	7
Region XI Officers and Board Members	8-13
ACSA Mission Statement	13
Region XI President's Goal for 2012-2013	13
Region XI Budget for 2012-2013	15
Roster of Region XI Presidents	15
State Council Representatives	17-18
State Committee Representatives	19
Region/ Charter/ State Calendar 2012-2013	21-24
Region XI Newsletter/ Handbook Deadline Dates	24
Charter Council Officers and Directors	
East Kern	26
Inyo/Bodie	27
Kings	28-29
Tulare	30-31
West Kern	32
How state ACSA works	35
ACSA Organization Chart 3	36

***[www.acsaxi.org](http://www.acsaxi.org)***

Appreciation.... To All Our Friendly Advertisers

- A+ Auto & Home Insurance (California Casualty)
  - Bell Works Educational Solution
  - Buckham- Mitchell, Inc
- Educational Employees Credit Union
  - FAST Federal Credit Union
  - Hodel's Restaurant
- IDEA! Printing & Graphics
  - Jakes Steakhouse
  - Kern Trophies
- Southwest School Supplies

# FAST: family

Membership open to anyone who lives, works, or worships in Kings County.

- Checking & Savings
- Online Banking & Bill Pay
- Auto / Home / Signature Loans
- Visa Debit and Credit cards
- Fee-free ATM Deposits & Withdrawals Worldwide with Co-Op Network
- Investment Services & Retirement Planning
- Direct Deposit
- Financial Education

Most payrolls post to your account up to 2 days early!



FUN : SIMPLE : FAST

Hanford • Lemoore • Avenal

559-584-0922 | [www.fastcu.com](http://www.fastcu.com)



# Offices and Services



## **Interim Executive Director**

### **Karen Stapf Walters**

1029 J Street, Suite 500  
Sacramento, CA 95814  
Tel (916) 444-3216  
(800) 890-0325  
Fax (916) 290-0420  
kstapfwalters@acsa.org

## **Assistant Executive Director, Communications**

### **Julie White**

Tel (916) 329-3832  
e-fax (916) 290-0402  
jwhite@acsa.org

## **Assistant Executive Director, Educational Services**

### **George Manthey**

Tel (650) 259-3416  
e-fax (650) 240-0676  
gmanthey@acsa.org

## **Assistant Executive Director, Financial Services**

### **David Gasser**

Tel (650) 259-3431  
e-fax (650) 240-0673  
dgasser@acsa.org

## **Government Relations**

### **Karen Stapf Walters, Interim Executive Director**

Tel (916) 329-3822  
e-fax (916) 290-0420  
kstapfwalters@acsa.org

## **Assistant Executive Director, Member Services & Professional Standards**

### **Joseph Jones**

Tel (916) 329-3823  
e-fax (916) 290-0394  
jjones@acsa.org



ACSA President  
David A. Gomez  
Retired Superintendent  
1029 J Street, Suite 500  
Sacramento, CA 95814  
Cell (805) 300-5139  
drdavidgomez@sbcglobal.net

## **Sacramento**

1029 J Street, Suite 500  
Sacramento, CA 95814  
(916) 444-3216  
(800) 608-ACSA  
Fax (916) 444-3739

## **Burlingame**

1575 Bayshore Highway  
Burlingame, CA 94010  
(650) 692-4300  
(800) 608-ACSA

Educational Services  
Fax (650) 692-6858

Executive Office  
Fax (650) 692-1508

Financial Services  
Fax (650) 259-1029

Member Services & SASS  
Fax (650) 692-7297

## **Ontario**

Palm Brook Corporate Center  
3602 Inland Empire Boulevard Suite A-230  
Ontario, CA 91764  
(909) 484-7503  
(800) 608-ACSA  
Fax (909) 484-7504

# Financial Education: Money Matters



## **Educational Employees Credit Union continues to be your partner in education.**

EECU is dedicated to providing financial education to our members and community by hosting educational workshops on various financial topics. Each workshop is tailored to the specific audience (elementary through college students, parents, teachers, and employees).

### **Topics covered during a workshop include:**

- **Elementary School** •  
*Saving Money Is Fun!*
- **Middle School** •  
*Money Doesn't Grow On Trees*
- **High School** •  
*Personal Finance*
- **College/Adult Education** •  
*Budgeting/Credit/Identity Theft*

To schedule a presentation and/or workshop, contact:  
Jeff Williams, Member Education Director

Email: [jeffw@myeecu.org](mailto:jeffw@myeecu.org)  
Phone: 559-437-7796



**Educational  
Employees**  
CREDIT UNION



**myEECU.org**

# Region XI President's Message

**Kirsti Smith**

Region XI President 2012-2013



Welcome back for the 2012 – 2013 School Year!

Thank you for your continuing involvement in ACSA! As we begin another exciting and challenging school year your participation and advocacy at all levels of ACSA has never been more critical than now!

Each year the challenges of school leadership grow. As an administrator in today's society you need to wear many hats, as a parent, a business partner, a social worker, a teacher, a manager, an educational leader and a cheer leader. This generation of school leaders has had to face many changes and overcome obstacles at a very rapid pace and yet has accomplished so much for our students.

This year Region XI continues its drive to include as many Region members as possible in region events. There are 15 new officers, committee and council members. Meetings will be more accessible for all members as there will be an increase of video conferences from one to two and three delegate assemblies up from two. Each Region meeting will include a short presentation from one of our five Charters. The success of the Tulare CUE and Leadership Conference stimulated this year's Kern CUE and Leadership conference in October.

We are excited to have our distant friends from Inyo/Mono County join us this year as they continue the connection from hundreds of miles away. The unique demographics of Region XI has given us our personality and desire to stay connected and share with each other our successes.

At the region level, the board members worked hard this summer to develop goals for the 2012-2013 school year that would help us grow as an organization and personally. I want to thank all who attended the summer planning session. Your time and dedication is greatly appreciated. A summary of our goals follow:

1. **Support our educational leaders:** Leadership summit support, ACSA Academies, Region Fall CUE/Leadership Conference, Charter Conferences, Mentor Program, Scholarships, Networking.
2. **Ensure all students have the essential skills and knowledge needed to excel:** State ACSA Committees and Councils, Keep meetings relevant, timely and collaborative, each Charter will share a "best Practice".
3. **Champion Public Education:** Active participation in Legislative Action Day, Charters make visits to their own politicians, Read State ACSA emails for relevant information, and send responses to Region officers when requested.
4. **Build Membership:** Make ACSA accessible and relevant to all members and potential members. Bring in non-members as speakers.

This year will bring many opportunities for growth and success, if I can be of service to you, please contact me via email at [ksmith@ssusd.org](mailto:ksmith@ssusd.org) or by telephone at 760-499-1820. I appreciate the opportunity to be at your service in Region XI.

Sincerely,

**Kirsti Smith**

Region XI President 2012-2013

# ACSA Region XI Officers and Directors 2012-2013



## **PRESIDENT**

### **Kirsti Smith, Principal**

Murray Middle School  
Sierra Sands Unified School District  
236 E.Dana Ave.  
Ridgecrest, CA 93555  
W (760) 499-1821 H (760) 371-5700  
C (760) 371-5700 Fax (760) 446-3838  
ksmith@ssusd.org

## **PRESIDENT-ELECT**

### **Tom Addington, Superintendent**

Central Union School District  
15783 18th Ave.  
Lemoore, CA 93245  
W (559) 925-2619 x 618  
C (559) 381-3662  
darthhr@me.com



## **VICE PRESIDENT**

### **Blanca Cavazos, Chief Instructional Officer**

Kern County Office of Education  
1300 17th Street, Bakersfield, CA 93301  
W (661) 636-4428 Fax (661) 636-4428  
blcavazos@kern.org

## **VICE PRESIDENT: LEGISLATIVE ACTION (2012)**

### **Terri Rufert, Superintendent**

Sundale Union Elementary School District  
13990 Ave 240  
Tulare, CA 93274  
W (559) 688-7451 Fax (559) 688-5905  
C (559) 972-7320 H (559) 686-0436  
terri.rufert@sundale.org



## **SECRETARY (2012)**

### **Valerie Brown, Principal**

Maple School  
Tulare City School District  
640 West Cross St.  
Tulare, CA 93274  
W (559) 685-7270 Fax (559) 685-7337  
C (559) 799-8641 H (559) 627-0992  
vbrown@tcsd.k12.ca.us





**TREASURER**

**Jana Freeman, Principal**

Royal Oaks Elementary School  
Visalia Unified School District  
1323 Clover Dr.  
Visalia, CA 93277  
W (559) 730-7787  
C (559) 936-3045 Fax (559) 730-7844  
jfreeman@vusd.org

**PAST PRESIDENT**

**Jose Morales**

Director of Migrant Education  
Kern County Office of Education  
1300 17th Street, Bakersfield, CA 93301  
W (661) 636-4771 Fax (661) 636-4781  
C (661) 706-4647 H (661) 665-2774  
jomorales@kern.org



**STATE DIRECTOR (2014)**

**Dr. John Snavely, Superintendent**

Porterville, Unified School District  
600 West Grand Ave  
Porterville, CA 93257  
W (559) 793-2455 H (559) 784-8414  
Fax (559) 793-1088 C (559) 359-8574  
jsnavely@portervilleschools.org

**PAST STATE DIRECTOR**

**Dr. Carl Olsen, Superintendent**

Associate Professor of Education  
Point Loma Nazarene University  
780 Hollytree Lane  
Wasco, CA 93280  
W (661) 321-3480 Fax (661) 321-3488  
C (661) 201-0923 H (661) 758-4027  
olsencfl@gmail.com



**STATE SUPERINTENDENCY COUNCIL (2014)**

**Craig Wheaton, Superintendent**

Visalia USD  
5000 W. Cypress Ave.  
Visalia, CA 93277  
W (559) 730-7515 F (559) 730-7553  
cwheaton@vusd.org



**DIRECTOR (2014)**  
**East Kern Charter**  
**Paul Press, Principal**  
 Monroe Continuation High School  
 126 South Snyder Avenue  
 Tehachapi, CA 93561  
 (661) 822-2123 Fax (661) 822-2188  
 ppress@teh.k12.ca.us



**DIRECTOR (2015)**  
**Inyol Bodie Charter**  
**Rich Boccia, Superintendent**  
 Mammoth Unified School District  
 P.O. Box 3509  
 Mammoth Lakes, CA 93546  
 W (760) 934-6802 F (760) 934-6803  
 C (760) 709-6616  
 rboccia@mammothusd.org



**DIRECTOR (2015)**  
**Kings County Charter**  
**Diane Cox, Superintendent**  
 Pioneer Union ESD  
 1888 North Mustang  
 Hanford, CA 93230  
 W (559) 585-2400 ext. 4141 H (661) 979-8544  
 Fax (559) 585-2420 C (559) 469-9810  
 coxd@puesd.k12.ca.us



**DIRECTOR (2015)**  
**Tulare County Charter**  
**Dr. Carolyn Kehrli, Superintendent**  
 Cutler-Orosi JUSD  
 12623 Avenue 416  
 Orosi, CA 93647  
 W (559) 528-4763 C (559) 999-9245  
 F (559) 528-9319  
 ckehrli@cojUSD.org



**DIRECTOR (2015)**  
**Tulare County Charter**  
**Dr. Jeremy Powell, Principal**  
 Bartlett Middle School  
 Porterville Unified School District  
 600 West Grand  
 Porterville, CA 93257  
 W (559) 782-7100 F (559) 784-3433  
 C (559) 594-3830 H (559) 592-5619  
 powell@portervilleschools.org



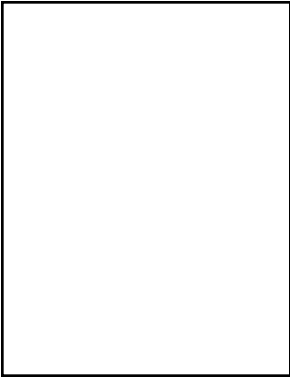
**DIRECTOR (2015)**  
**Tulare County Charter**  
**Steve Stafford, Retired**  
 1052 N. Manor  
 Tulare, CA 93274  
 H (559) 686-7563  
 C (559) 331-9016  
 sstafford@tcsd.k12.ca.us

**DIRECTOR (2015)**  
**West Kern Charter**  
**David Bowling**

Teresa Burke Elementary School  
 Wasco Union School District  
 639 Broadway  
 Wasco, CA 93280  
 W (661-758-7480 Fax (661) 758-3024  
 dabowling@wusd.org



**DIRECTOR (2014)**  
**West Kern Charter**  
**TBD**



**DIRECTOR (2013)**  
**Terry Wolfe**  
 Retired  
 H (661) 831-5357



**MEMBER SERVICES (2013)**  
**Lisa Horne, Principal**  
 Pioneer Union Elementary School District  
 1888 N. Mustang Drive  
 Hanford, CA 93230  
 W (559) 584-8831 ext. 1614  
 C (559) 469-7043 H (559) 382-3485  
 hornel@puesd.k12.ca.us





**EAST KERN CHARTER PRESIDENT**

**Clara Finneran, Principal**

James Monroe Middle School  
Sierra Sands Unified School District  
340 W Church Ave.  
Ridgecrest, CA 93555  
W (760) 499-1830 Fax (760) 375-8781  
cfinneran@ssusd.org



**INYO/BODIE CHARTER PRESIDENT**

**Don Clark, Superintendent**

East Sierra Unified School District  
P.O. Box 575  
Bridgeport, CA 93571  
W (760) 932-7443 H (559) 495-2562  
Fax (760) 932-7441 C (707) 396-6646  
dclark@esusd.org



**KINGS COUNTY CHARTER PRESIDENT**

**Heiko Sweeney, Principal**

Akers School  
Central Union Elementary School District  
15783 18th Ave.  
Lemoore, CA 93245  
W (559) 998-5707 Fax (559) 998-7517  
hsweeney@central.k12.ca.us



**TULARE COUNTY CHARTER PRESIDENT**

**Frank Silveira, Principal**

Exeter Union High School  
Exeter Public Schools  
505 Rocky Hill Dr.  
Exeter, CA 93221  
W (559) 592-2127 ext. 202 Fax (559) 592-3539  
C (559) 280-0725 H (559) 280-0725  
fsilveira@exeter.k12.ca.us

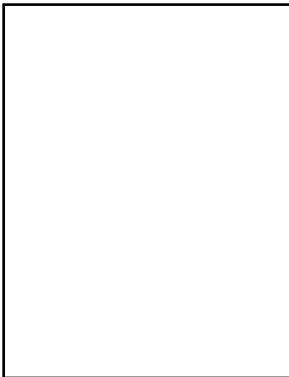


**WEST KERN CHARTER PRESIDENT**

**Deanna Clarke, Principal**

Endeavour Elementary  
Fruitvale School District  
9300 Meachan Rd,  
Bakersfield, CA 93312  
W (661) 588-3553 C (661) 201-0906  
declarke@fruitvale.k12.ca.us





**State ACSA Member Services  
(Part time paid staff)  
TBD**

**EXECUTIVE DIRECTOR REGION XI**

**David Tonini**

241 East Parkview  
Visalia, CA 93277  
H (559) 732-6356  
C (559) 280-6228

**davidto02@comcast.net**



**NEWSLETTER/ HANDBOOK EDITOR**

**Richard A. Schlager**

787 North "G" Street  
Porterville, CA 93257  
W (559) 784-1270

raschlager1927@yahoo.com



## **Association of California School Administrators**

### Mission Statement

- Support California's education leaders
- Ensure all students have the essential skills and knowledge needed to excel
- Champion public education

### **Region XI President's Goals for 2012-2013**

The following specific goals will assist in maintaining a focus of effort on the four (4) areas of emphasis for 2012-2013:

1. Support our educational leaders.
2. Ensure all students have the essential skills and knowledge needed to excel and ...
3. Champion Public Education.
4. Build Membership.



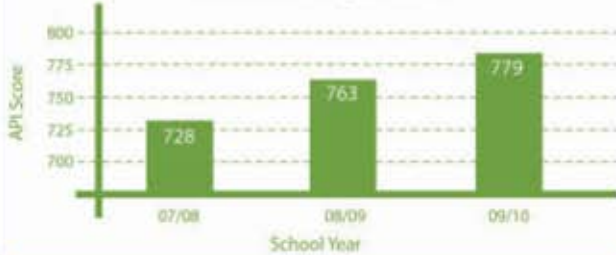
# Spend Less and Get More

Why pay more? Bellwork offers affordable, efficient, and effective daily standards practice and assessment programs at about half the cost of competitive programs.



## Congratulations to the following Region XI Bellwork users!

Morningside Elementary (K-5) - Delano Union Elementary  
API Growth Using Bellwork



Olive Street Elementary (K-6) - Porterville Unified  
API Growth Using Bellwork



Research-based and state-approved supplemental curriculum: Reading/Language Arts, Mathematics, Science, History–Social Science, and Writing for Levels K–12.

**Order Now!** Give us a call at 1-800-782-8869 or visit us online at [bellwork.com](http://bellwork.com).

# REGION XI BUDGET 2012-2013

<b>INCOME</b>	<b>ESTIMATED</b>	
1. Conference .....		2,000.00
2. Dues Rebates .....		55,000.00
3. Interest .....		140.00
4. Miscellaneous .....		100.00
5. Newsletter/Handbook .....		2,525.00
<b>TOTAL.....</b>		<b>59,765.00</b>

<b>Expenditures</b>	<b>ADOPTED (09/06/2012)</b>	
1. Awards Lucheon.....		1,625.00
2. Board of Directors.....		800.00
3. Clerical and Supplies .....		500.00
4. Every Student Succeeding.....		1,000.00
5. Executive Director Expenses.....		4,276.00
6. Legislative Action.....		6,000.00
7. Newsletter .....		2,500.00
8. Newsletter Editor Expenses.....		2,500.00
9. Newsletter Editor Salary .....		5,024.00
10. Membership .....		500.00
11. Mentor Program.....		1,000.00
12. Phone .....		600.00
13. President .....		2,500.00
14. Professional Development .....		1,500.00
15. Public Relations/Awards.....		1,800.00
16. Rebates to Charters.....		12,300.00
17. Region Conference.....		1,500.00
18. Region Deledgate Assembly.....		1,050.00
19. Region Retreat .....		3,000.00
20. Scholarships.....		4,500.00
21. State Delegate Assembly .....		790.00
22. Website .....		250.00
23. Reserves .....		4,250.00
<b>TOTAL.....</b>		<b>59,765.00</b>

## ROSTER OF REGION XI PRESIDENTS

1971-72 John Prueitt	1985-86 Anne Scott	1999-00 Guadalupe Solis
1972-73 Sherlo Shively	1986-87 David Itzenhauser	2000-01 Mollie Graham
1973-74 J. Sam Wallace	1987-88 Bill Black	2001-02 Sally Mailand
1974-75 DeWeese Stevens	1988-89 Al Sandrini	2002-03 Brian Mark
1975-76 Richard Ehrgott	1989-90 Nancy Cook	2003-04 Steve Tietjen
1976-77 Betty Jane Tiffany	1990-91 James A. Forrest	2004-05 Christine Frazier
1977-78 Herb Neufeld	1991-92 Tom Bates	2005-06 Craig Wheaton
1978-79 Gene Billingsley	1992-93 Lillian Tafoya	2006-07 Joanna Rummer
1979-80 Albert Roberts	1993-94 Don Erwin	2007-08 Christine Andrada
1980-81 James Fillbrandt	1994-95 John M. Hamlin	2008-10 Terri Rufert
1981-82 Richard Schlagel	1995-96 John Bogie	2010-11 Rebecca Mestaz
1982-83 Anaheed Solakian	1996-97 Walt L. Hanline	2011-12 Jose Morales
1983-84 Ed Baldwin	1997-98 Carolyn Kehrli	2012-2013 Kirsti Smith
1984-85 Bill Williams	1998-99 Milt Woolsey	



# IDEA!

PRINTING & GRAPHICS INC.

***Helping Drive Business to your Door.***



**559.733.4149** • Fax 559.636.3690  
1921 E. Main Street • Visalia, CA 93292  
[www.visaliaidea.com](http://www.visaliaidea.com)

**Vehicle Wraps • Fleet Decals  
Banners • Floor Graphics  
Trade Show Displays  
Designs with Purpose**



# Council Representatives for Region XI

## 2012 - 2013

### Adult Education

2014

TBD

### Business Services

2015



#### **Robert Groeber, Assistant Superintendent**

Visalia USD  
5000 W. Cypress  
Visalia, CA 93277  
W (559) 730-7529 F(559) 730-7346 H (559) 561-4477  
rgroeber@vusd.org

### Career Technical

2014



#### **Laura Hickle, Coordinator, Special Projects**

Sierra Sands USD  
113 Felspar  
Ridgecrest, CA 93555  
W (760) 499-1642 Fax (760) 375-1959  
lhickle@ssusd.org

### Classified Educational Leaders

2014



#### **Micaela Rodriguez, Administrative Assistant**

Cutler-Orosi JUSD  
12623 Avenue 416  
Orosi, CA 93647  
W (559) 528-4763 x1008 F (559) 528-9319  
H (559) 564-2391 C (559) 246-5520  
mrivera@cojusd.org

### Curriculum, Instruction & Accountability

2014



#### **Elizabeth Lozano, Assistant Superintendent**

Educational Services/Human Resources  
Central Union Elementary School District  
15783 18th Avenue  
Lemoore, CA 93245  
W (559) 924-5683  
elozano@central.k12.ca.us

### Educational Options

2013



#### **Warcester Williams, Director Alternative Education**

KCOE  
1300 17th Street, City Centre  
Bakersfield, CA 93301  
W (661) 636-4319 F (661) 636-4127 H (661) 345-3454  
wawilliams@kern.org

### Elementary Education

2014



#### **Deanna Clarke, Principal**

Endeavour Elementary  
Fruitvale School District  
9300 Meachan Rd,  
Bakersfield, CA 93312  
W (661) 588-3553 C (661) 201-0906  
declarke@fruitvale.k12.ca.us

**Human Resources**  
2015



**John Rodriguez, Director, HR**  
Tulare COE  
7000 Doe Avenue, Suite C  
Visalia, CA 93291  
W (559) 733-6322  
jrodriguez@tcoe.org

**Middle Grades  
Education**  
2014



**Clara Finneran, Principal**  
James Monroe Middle School  
340 W Church St.  
Ridgecrest, CA 93555  
W (760) 499-1830 Fax (760) 375-8781  
cfinneran@ssusd.org

**Secondary Education**  
2014



**Fernie Marroquin, Principal**  
Redwood High School  
1001 W Main St  
Visalia, CA 93291  
W (559) 730-7367 Fax (559) 730-7744  
fmarroquin@vusd.org

**Student Services and  
Special Education**  
2013



**Scott Chennault, Assistant Principal**  
Central Union Elementary  
Admiral Akers School  
P.O Box 1339  
N.A.S Lemoore, CA 93245  
W (559) 998-5707 Fax (559) 998-7517  
schennau@central.k12.ca.us

**Superintendency  
Council**  
2014



**Craig Wheaton, Superintendent**  
Visalia USD  
5000 W. Cypress Ave.  
Visalia, CA 93277  
W (559) 730-7522 F (559) 730-7508  
cwheaton@vusd.org

**Assessment &  
Representative  
Cur, Instruction and  
Accountability**



**Craig Wheaton, Superintendent**  
Visalia USD  
5000 W. Cypress Ave.  
Visalia, CA 93277  
W (559) 730-7522 F (559) 730-7508  
cwheaton@vusd.org

**ACSA/ Xerox Alliance  
State Appointed**



**Kevin Silberberg, Superintendent**  
Standard SD  
1200 N Chester Avenue  
Bakersfield, CA 93308  
W (661) 392-2110 Fax (661) 392-0681  
ksilberb@standard.k12.ca.us

# Committee Representatives for Region XI

## 2012 - 2013

### Co-Administration 2013



**Matt Diggle, Assistant Principal**  
Fruitvale Elementary School  
Endeavour Elementary  
9300 Meacham Rd, Bakersfield, CA 93312  
W (661) 588-3550 Fax (661) 587-9318  
mdiggle@fruitvale.k12.ca.us

### Equity Achievement & Diversity 2013



**Dr. Sarah Koligian, Superintendent**  
Tulare JUHSD  
426 North Blackstone  
Tulare, CA 93274  
W (559) 688-2021 Fax (559) 687-7317 C (559) 288-4122  
sarah.koligian@tulare.k12.ca.us

### Legislative Policy 2014



**Jose Morales, Director of Migrant Education**  
Kern County Office of Education  
1300 17th Street  
Bakersfield, CA 93301  
W (661) 636-4779 Fax (661) 636-4781  
H (661) 665-2774 C (661) 706-4647  
jomorales@kern.org

### Member Services 2013



**Lisa Horne, Principal**  
Pioneer Elementary School  
1888 N. Mustang Drive  
Hanford, CA 93230  
W (559) 584-8831 H (559) 362-3485 C (559) 362-3485  
hornel@puesd.k12.ca.us

### Retirement 2015



**Bill Black, Retired**  
19095 Fremont Avenue  
Lemoore, CA 93245  
C (559) 924-9683  
lemore.black@gmail.com

### Small School District 2013



**Kerry Beauchaine, Superintendent/ Principal**  
Oak Valley Elementary School District  
24500 Road 68, Tulare, CA 93274  
W (559) 688-2908 Fax (559) 688-8023  
C (559) 903-8546  
kerry.beauchaine@oakvalley.k12.ca.us

### Urban Education 2014



**Nancy Olcott, Director, Learning Support**  
2014 Bakersfield City School District  
1300 Baker Street  
Bakersfield, CA 93305  
W (661) 631-4641 Fax (661) 631-4623  
olcottn@bcasd.com

### CAPEA 2013



**Philomena Hall, Regional V Coordinator, Migrant Education**  
Kern County Office of Education  
1300 17th Street, Bakersfield, CA 93301  
W (661) 636-4776 C (661) 337-0220  
phall@kern.org

# **SOUTHWEST SCHOOL & OFFICE SUPPLY**



## **Stationery, Paper, Furniture & Art**

**"Taking Care of School  
Needs since 1976"**

**Joe De La Cruz**

1915 N. MACARTHUR DR. , STE 400

TRACY, CA 95376

(800) 289-0268

TEL: (209) 839-2222

CELL: (559) 410-0790

FAX: (209) 836-0268

EMAIL: [delacruz@southwestschool.com](mailto:delacruz@southwestschool.com)



# 2012 - 2013 Calendar

## Region XI, The Charters, State Activities / Events

### September 2012

6	West Kern Charter Board... Nodels, Bakersfield	7:00 am
6	Regional XI Borad Meeting, Hodels, Bakersfield	8:00 am
14	Tulare County Charter Board Meeting	7:00 am
14	Kings Charter Board Meeting, Central Union School District	12:00 pm
27	Kings Charter Annual Fall Conference, Akers Elementary School	4:30 pm

### October 2012

1	East Kern Charter, Indian Wells Lodge	5:30 pm
4	West Kern Charter Board, Hodels	7:00 am
4	Region XI Delegate Assembly, Hodels, Bakersfield	8:00 am
11	State Delegate Assembly, Los Angeles	7:00 am
12	Tulare County Charter Board Meeting	7:00 am
12	Kings County Charter Board Meeting, Central Union School District	12:00 pm
20	Region XI Annual Fall Conference CUE, CSUB, Bakersfield	8:00 am
	Kings Charter Retirement Breakfast, Vinyard Inn, Lemoore	8:15 am

### November 2012

1	West Kern Charter Board Meeting, Hodels, Bakersfield	7:00 am
1	Region XI Board Meeting, Hodels, Bakersfield	8:00 am
5	East Kern Charter, Tehachapi	5:30 pm
8-10	State ASCA Leadership Summit, Sheraton Hotel & Marina, San Diego	
9	Kings County Charter Board Meeting, Central Union School District	12:00 pm
16	Tulare County Charter Board Meeting, Apple Annies, Tulare	7:00 am

## December 2012

6	Tulare County Charter Board Meeting	7:00 am
6	Region XI Board Meeting, Video Confrence, Charter Sites TBD	8:00 am
14	Kings County Charter Board Meeting, Central Union School District	12:00 pm

## January 2013

10	West Kern Charter Board, Hodels, Bakersfield	7:00 am
10	Region XI Awards Committee Selections	TBD
11	Tulare County Charter Board Meeting	7:00 am
11	Kings County Charter Board Meeting	12:00 pm
29	Region XI Executive Board Meeting (Ex Director's Evaluation)	7:30 am
29	Region XI Delegate Assembly, Hodels, Bakersfield	8:00 am

## February 2013

4	East Kern Charter, Mojave	5:30 pm
7	State Delegate Assembly, Location TBD	
8	Tulare County Charter Board Meeting, Apple Annies, Tulare	7:00 am
8	Kings County Charter Board Meeting, Central Union School District	12:00 pm
TBD	West Kern Charter Annual Golf Tournament, Location TBD	TBD

## March 2013

7	West Kern Charter Board Meeting, Hodels, Bakersfield	7:00 am
7	Region XI Board Meeting, Hodels, Bakersfield	8:00 am
8	Kings County Board Meeting, Central Union School District	12:00 pm
14	Tulare Charter Annual Spring Conference, Geritage Complex, Tulare	TBD
15	Tulare County Charter Board Meeting, Apple Annies, Tulare	7:00 am
17-18	Legislative Action Day, Sacramento	
TBD	Tulare County Charter Annual Spring Conference	TBD

## April 2013

4	West Kern Charter, Hodels, Bakersfield	7:00 am
4	Region XI Board Meeting (Video Conference)	8:00 am
12	Tulare County Charter Board Meeting, Apple Annies, Tulare	7:00 am
12	Kings County Charter Board Meeting, Central Union School District	12:00 pm
24	West Kern Administrative Assistant's Luncheon, Stars Theater, Bakersfield	11:30 am
26	Tulare County Charter ESS Breakfast, Visalia Unified School District Board Room	7:00 am
29	East Kern Charter, indianwells Lodge	5:30 pm
TBD	Tulare County Charter ESS Breakfast	7:00 am
TBD	Kings County Administrative Assistant's Luncheon	TBD

## May 2013

2	West Kern Charter Board Meeting, Hodels, Bakersfield	9:15 am
2	Region XI Delegate Assembly, Hodels, Bakersfield	9:30 am
2	Region XI Annual Awards Luncheon, Hodels, Bakersfield	12:00 am
3	Tulare County Charter Annual Recognition Retirement Dinner White Horse Inn, Three Rivers	TBD
9	State Delegate Assembly, Scaramento	

## May 2013 (continued)

10	Kings County Charter Board Meeting, Central Union School District	12:00 pm
17	Tulare County Charter Board Meeting, Apple Annies, Tulare	7:00 am
17	Kings County Charter Election, End of Year Social and Awards	4:00 pm
TBD	Tulare County Charter Annual Recognition/Retirement Dinner	TBD

## June 2013

TBD	West Kern Charter Annual Awards Dinner, Rio Bravo, Bakersfield	5:30 pm
13	Kings County ASCA Annual Tom Lasek Memorial Golf Tournament, Lemoore Golf Course	TBD
17-18	Region XI Planning Retreat, Central Union School District, Lemoore	TBD

## Region XI Newsletter. Handbook Deadlines

Issue	News Deadline	Email/ Website
Fall 2012	September 30, 2012	October 30, 2012
Winter 2012-13	December 15, 2012	January 30, 2013
Spring 2013	March 1, 2013	April 1, 2013
Summer 2013	May 30, 2013	June 30, 2013
Handbook 2013-2014	June 30, 2013	September 30, 2013





Owner

Barbara Ferrante

661

822-6015



213 South Curry Street, Tehachapi Ca 93561

661

822-6015

fax 822-6092

*Thank you for your patronage*

email: [barbara@jakessteakhouse.net](mailto:barbara@jakessteakhouse.net)

visit on the web at [www.jakessteakhouse.net](http://www.jakessteakhouse.net)



## EAST KERN CHARTER

**Clara Finneran**



**President**

**Ms. Clara Finneran**

Principal, James Monroe Middle School  
340 W. Church St.  
Ridgecrest, CA 93555  
(760) 499-1830  
cfinneran@ssusd.org

**Vice President**

**Mrs. Melissa Christman**

Principal, Faller Elementary School  
1500 W. Upjohn St.  
Ridgecrest, CA 93555  
(760) 499-1690  
mchristman@ssusd.org

**Secretary**

**Mrs. Bev Thompson**

Principal, Tehachapi High School  
801 S. Dennison Rd.  
Tehachapi, CA 93561  
(661) 822-2133  
bthompson@teh.k12.ca.us

**Treasurer**

**Mrs. Elaine Janson**

Assistant Superintendent for Business Services  
Sierra Sands Unified School District  
113 Felspar Ave.  
Ridgecrest, CA 93555  
(760) 499-1604  
ejanson@ssusd.org

**Director**

**Paul Press**

Principal, Monroe Continuation High School  
126 South Snyder Avenue  
Tehachapi, CA 93561  
(661) 822-2123 Fax (661) 822-2188  
ppress@teh.k12.ca.us



## INYO/BODIE CHARTER



**Don Clark**

**President**

**Don Clark**  
Superintendent/Principal  
Eastern Sierra  
Unified School District  
PO Box 575  
Bridgeport, CA 93517  
(760)932-7443  
dclark@esusd.org

**Treasurer**

**Joel Hampton**  
Superintendent/Principal  
Owens Valley Superintendent  
of Schools  
PO Drawer E  
202 South Clay Street  
Independence, CA 93526  
760-878-2405  
jhampton@ovusd.k12.ca.us

**Vice President**

**Victor Hopper**  
Superintendent  
Lone Pine  
Unified School District  
301 South Hay Street,  
Lone Pine, CA 93545  
760-876-5579  
vhopper@lpusd.k12.ca.us

**Past President**

**Joel Hampton**  
Owens Valley Superintendent  
of Schools  
Superintendent/Principal  
PO Drawer E  
202 South Clay Street  
Independence, CA 93526  
760-878-2405  
jhampton@ovusd.k12.ca.us

**Secretary**

**Rosanne Lampariello**  
Principal  
Mammoth  
Unified School District  
1601 Meridian Boulevard  
Mammoth Lakes, CA 93546  
(760) 934-6802  
rlampariello@mammothusd.org

**Director**

**Rich Boccia, Superintendent**  
Mammoth Unified  
School District  
P.O. Box 3509  
Mammoth Lakes, CA 93546  
W (760) 934-6802  
F (760) 934-6803  
C (760) 709-6616  
rboccia@mammothusd.org



## KINGS CHARTER



**Heiko Sweeney**

**President:**

**Heiko Sweeney**  
Principal  
Akers School  
15783 18th Avenue  
Lemoore, CA 93245  
559-998-5707  
hsweeney@central.k12.ca.us

**Secretary:**

**Glenda Woolley**  
Program Director  
Kings County Office  
of Education  
876 E. D Street  
Lemoore, CA 93245  
559-589-2532  
gwoolley@kingscoe.org

**Past President:**

**Lisa Horne**  
Principal  
Pioneer Elementary School  
8810 14th Avenue  
Hanford, CA 93230  
559-584-8831  
Hornel@puesd.k12.ca.us

**Treasurer:**

**Bill Woolley**  
Retired  
559-386-4162  
bill\_woolley@sbcglobal.net

**President Elect:**

**Rob Hudson**  
Superintendent  
Alpaugh USD  
PO Box 9  
Alpaugh, CA 93201  
559-949-8413  
C 559-786-9140  
robh@alpaugh.k12.ca.us

**Regional Director:**

**Diane Cox**  
Superintendent  
Pioneer Union ESD  
1888 N. Mustang Drive  
Hanford, CA 93230  
559-585-2400  
cox@puesd.k12.ca.us

**Vice President:**

**Greg Henry**  
Principal  
Pioneer Middle School  
101 W. Pioneer Way  
Hanford, CA 93230  
559-584-0112  
henryg@puesd.k12.ca.us

**Board Member:**

**Carmen Barnhart**  
Assistant Superintendent  
Educational Services  
1144 W Lacey Boulevard  
Hanford, CA 93230  
559-589-7089  
cbarnhart@kings.k12.ca.us



# BOARD OF DIRECTORS

Board Member:

**Rhett Kenney**

Learning Coordinator  
Meadow Lane Elementary  
100 Vine St.  
Lemoore, CA 93245  
559-924-6840  
rkenney@kings.k12.ca.us

Board Member:

**Debbie Muro**

Superintendent  
Lemoore High School District  
5 Powell Avenue  
Lemoore, CA 93245  
559-924-6610  
dmuro@luhsd.k12.ca.us

Ex Officio Member:

**Tim Bowers**

Superintendent of Schools  
Kings County Office of Education  
1144 W Lacey Boulevard  
Hanford, CA 93230  
559-584-1441  
Tbowers@kings.k12.ca.us

Ex Officio Member and Region XI  
Retired Members Committee  
Representative:

**Bill Black**

Retired ACSA Member  
19095 Fremont Avenue  
Lemoore, CA 93245  
559-924-9683  
Lemoore.black@gmail.com

Student Services Special Education  
Council Rep:

**Scott Chennault**

Assistant Principal  
Akers School  
Franklin and Constellation Avenues  
NAS Lemoore, Ca 93245  
559-998-5707  
schennau@central.k12.ca.us

Region Membership Services:

**Lisa Horn**

Principal  
Pioneer Elementary School  
1888 N. Mustang Drive  
Hanford, CA 93230  
W (559) 584-8831 H (559) 362-3485  
C (559) 362-3485  
hornel@puesd.k12.ca.us

Region XI Representative Curriculum  
and Instruction Council:

**Elizabeth Lozano**

Assistant Superintendent  
Educational Services/HR  
Central Union Elementary  
School Dist.  
15783 18th Avenue  
Lemoore, CA 93245  
559-924-5683  
elozano@central.k12.ca.us

Regional President Elect:

**Tom Addington**

Superintendent  
Central Union ESD  
15783 18th Avenue  
Lemoore, CA 93245  
559-924-3405  
darthhr@me.com

VP for Legislative Action:

**Tom Addington**

Superintendent  
Central Union ESD  
15783 18th Avenue  
Lemoore, CA 93245  
559-924-3405  
darthhr@me.com

Region XI Newsletter Editor:

**Dick Schlagel**

787 N. G Street  
Porterville, CA 93257  
559-784-1270  
raschlagel1927@yahoo.com

Executive Director:

**David Tonini**

241 E Parkview  
Visalia, CA 93277  
(559) 280-6228  
davidto02@comcast.net

Board Member

**John Raven**

Frontier Elementary School –  
Principal  
1888 N. Mustang Drive  
559-585-2430  
ravenj@puesd.k12.ca.us

Board Member

**Judy Horn**

Reef Sunset  
jhorn@rsusd.net

**Barbara Zaino**

Assistant Superintendent/HR  
and Sp. Education  
Kings County Office of Education  
1144 W Lacey Blvd.  
Hanford, CA 93239  
(559) 589-7094  
bzaino@kingscoe.org



## TULARE CHARTER



**Frank Silveira**

**President**

**Frank Silveira**

Exeter Union High  
Principal  
505 Rocky Hill Drive  
Exeter, California 93221  
W (559) 592-2127 Fax (559) 592-3539  
fsilveira@exeter.k12.ca.us

**President Elect**

**Lora Haston**

Alta Vista Elementary School  
Superintendent-Principal  
2293 E. Crabtree Ave.  
Porterville, California 93257  
W (559) 782-5700 Fax (559) 782-5715  
lhaston@alta-vista.k12.ca.us

**Vice President**

**Donya Wheeler**

Lincoln Elementary School  
Principal  
333 South "D" Street  
Exeter, California 93221  
W (559) 592-2141 Fax (559) 592-5249  
dwheeler@exeter.k12.ca.us

**Secretary**

**Mimi Bonds**

Visalia Unified School District  
Coordinator of Student Services  
5000 W. Cypress Avenue  
Visalia, California 93277  
W (559) 730-7385 Fax (559) 735-8079  
mbonds@vusd.org

**Treasurer**

**Lucy Van Scyoc**

Tulare Joint Union High District  
824 W. Maple  
Tulare, California 93274  
W (559) 686-7400 Fax (559) 687-7389  
lucy.vanscyoc@tulare.k12.ca.us

**Past President**

**Steve Tsuboi**

Sunnyside Union Elementary School  
Superintendent-Principal  
21644 Avenue 196  
Strathmore, California 93267  
W (559) 568-1741 ext. 207 Fax (559) 568-0291  
stsuboi@sunnyside.k.12.ca.us

# BOARD OF DIRECTORS

## **Steve Stafford**

Retired

## **Dr. Jeremy Powell**

Bartlett Middle School

Principal

335 North G Street  
Porterville, CA 93257  
W 559/782-7100 Fax 559/784-3432  
powell@portervilleschools.org

## **Dr. Carolyn Kehrli**

Superintendent

Cutler-Orosi

Joint Unified School District  
12623 Avenue 416  
Orosi, CA 93647  
W 559/528-4763 FAX 559/528-3132  
ckehrli@cojusd.org

## **Tim Hire**

Superintendent

Exeter Public Schools

134 South E Street

Exeter, CA 93221

W 559/592-9421 FAX 559/592-9445  
thire@exeter.k12.ca.us

## **Val Brown**

Principal

Maple School

640 W. Cross

Tulare, CA 93274

W 559/685-6270 FAX 559/685-7337  
vbrown@tcsd.k12.ca.us

## **Dr. Clare Gist**

Assist Superintendent, Business

Tulare City School District

600 N. Cherry

Tulare, CA 93274

559/685-7200 Fax 559/685-7248  
cgist@tcsd.k12.ca.us

## **Kerry Beauchaine**

Superintendent

Oak Valley Union School District

24500 Road 68

Tulare, CA 93274

W 559/688-2908 FAX 559/688-8023  
kerry.beauchaine@oak-valley.k12.ca.us

## **Dr. Terry McKittrick**

359 Village Drive, Dinuba, CA 93618

559/591-6737

jtmphd@comcast.net

## **Dr. John Snavelly**

Superintendent

Porterville Unified School District

600 W. Grand Ave

Porterville, CA 93257

W 559/793-2400 FAX 559/793-1088

jsnavelly@portervilleschools.org

## **Dr. Craig Wheaton**

Superintendent

Visalia Unified School District

5000 W. Cypress

Visalia, CA 93277

W 559/730-7300 Fax 559/730-7559

cwheaton@vusd.org

## **Dr. Fernie Marroquin**

Principal

Redwood High School

1001 W. Main

Visalia, CA 93291

W 559/730-7367 Fax 559/730-7741

fmarroquin@vusd.org

## **Terri Rufert**

Superintendent

Sundale Union School District

13990 Avenue 240

Tulare, CA 93274

W 559/688-7451 Fax 559/688-5905

terri.rupert@sundale.org

## **Luis Castellanoz**

Superintendent

Tulare City School District

600 N. Cherry

Tulare, CA 93274

W 559/685-7200 Fax 559/685-7248

lcastellanoz@tcsd.k12.ca.us

## **Robert Groeber**

Assistant Superintendent

Visalia Unified School District

5000 W. Cypress

Visalia, CA 93277

W 559/730-7300 Fax 559/730-7559

rgroeber@vusd.org

## **Dr. Sarah Koligian**

Superintendent

Tulare Joint Union High

School District

426 N. Blackstone

Tulare, CA 93274

W 559/688-2021 Fax 559/687-7317

sarah.koligian@tulare.k12.ca.us

## **Phillip Pierschbacher**

Director of Personnel

Tulare City School District

600 N. Cherry

Tulare, CA 93274

W 559/685-7200 Fax 559/685-7248

ppierschbacher@tcsd.k12.ca.us

## **Jana Freeman (Carter)**

Principal

Royal Oaks

1323 Clover Drive

Visalia, CA 93277

W 559/730-7787 Fax 559/730-7844

jfreeman@vusd.org

## **Michaela Rodriguez**

Administrative Secretary

Cutler-Orosi Joint Unified School

District

12623 Avenue 416

Orosi, CA 93647

W 559/528-4763 Fax 559/528-3132

mrivera@cojusd.org

## **Tom Rooney**

Superintendent

Lindsay Unified School District

371 E. Hermosa

Lindsay, CA 93247

W 559/562-5111 Fax 559/562-4637

trooney@lindsay.k12.ca.us

## **Jim Vidak**

County Superintendent of Schools

Tulare County Office of Education

P. O. Box 5091

Visalia, CA 93278

W 559/733-6300 Fax 559/737-4378

jimv@tcoe.org



**Deanna Clarke**

## WEST KERN CHARTER

**President:** **Deanna Clarke**, Principal  
Endeavour Elementary  
Fruitvale School District  
9300 Meachan Rd., Bakersfield, CA 93312  
W (661) 588-3553 C (661) 201-0906  
declarke@fruitvale.k12.ca.us

**Vice President:** **Matt Diggle**, Assitant Principal  
Endeavour Elementary  
Fruitvale School District  
9300 Meachan Rd., Bakersfield, CA 93312  
W (661) 588-3550 F (661) 587-9318  
madiggle@fruitvale.k12.ca.us

**Membership:** **Jeff Vandernoor**, Principal  
Valley Oaks Charter

**Treasurer:** **Kathy Kouklis**, Assist. Superintendent  
Arvin Union School District  
737 Bear Mt. Blvd., Arvin, CA 93203  
W (661) 854-6512 F (661) 854-2362  
H (661) 665-0853 C (661) 903-1026  
kouklis@arvin-do.com

**Secretary:** **Richard Morosa**, Program Coordinator  
Highland School  
802 Concord Ct., Bakersfield, CA 93314  
Standard School District  
W (661) 392-2115 F (661) 345-5000  
C (661) 392-2142  
rmorosa@standard.k12.ca.us

**Past President:** **Dave Bowling**, Principal  
Teresa Burke Elementary  
Wasco Union Elementary School Dist.  
639 Broadway, Wasco, CA 93280  
W (661) 758-7480 F (661) 758-3024  
dabowling@wusd.org

**Representatives:** **Gerrie Kincaid**, Administrator  
Panama Buena Vista School District  
4200 Ashe Rd.  
Bakersfield, CA 93313  
W (661) 831-8331 F (661) 39802141  
gkincaid@pbvusd.net

**Representatives:** **Chris Crawford**, Superintendent  
Greenfield Union  
1024 Fairview Rd., Bakersfield, CA 93313  
W (661) 837-6000 F (661) 238-5103  
C (661) 831-2983  
crawford@gfusd.k12.ca.us

**Representatives:** **Ron Bryant**  
Taft City School District

**Representatives:** **Nancy Olcott**, Director,  
Learning Support  
Bakersfield City School District  
1300 Baker St., Bakersfield, CA 93305  
W (661) 631-4641 F (661) 631-4623  
olcott@bcsd.com

**Representatives:** **Mary Westendorf**, Superintendent  
Fruitvale School District  
7311 Rosedale Hwy.,  
Bakersfield, CA 93308  
W (661) 589-3830 ext. 206  
F (661) 589-3614  
mawestendorf@fruitevale.k12.ca.us

**Representatives:** **Tony Gisbertz**, Principal  
Highland Elementary  
Standard School District  
2900 Barnett St., Bakersfield, CA 93308  
W (661) 392-2115 F (661) 392-2142  
H (661) 393-2158 C (661) 978-9244  
tgisbertz@standard.k12.ca.us

**Representatives:** **Matt Torres**, Assist. Superintendent  
Fruitvale School District  
7311 Rosedale Hwy.  
Bakersfield, CA 93308  
W (661) 589-3830 F (661) 589-3614  
matorres@fruitevale.k12.ca.us





## PROTECTING WHAT MATTERS TO YOU

YOUR HOME, YOUR FAMILY, AND YOUR FUTURE.

**Buckman-Mitchell Insurance is proud to have protected schools, businesses and families since 1916.**

As an independent agency, with over 80 licensed insurance professionals, Buckman-Mitchell is ready to help with the best possible rates on:

- Health and life insurance
- Long-term disability
- Auto and home
- Business and agribusiness

And, expertise in retirement planning and investments.

**BUCKMAN-MITCHELL, INC.**  
FINANCIAL & INSURANCE SERVICES

ESTABLISHED IN 1916

500 N. Santa Fe, Visalia | California License #0A96361 #0011334 | 559 733-1181 | [bminc.com](http://bminc.com)

*Discount auto insurance  
for ACSA members only.*

*Protecting America's  
educators for over 50 years.*



*Low rates exclusively for  
ACSA members like you.*

As a member of ACSA-Region XI, you qualify for A+ Auto & Home Insurance Plus, provided by California Casualty.

It's an outstanding plan with discount rates negotiated just for you.

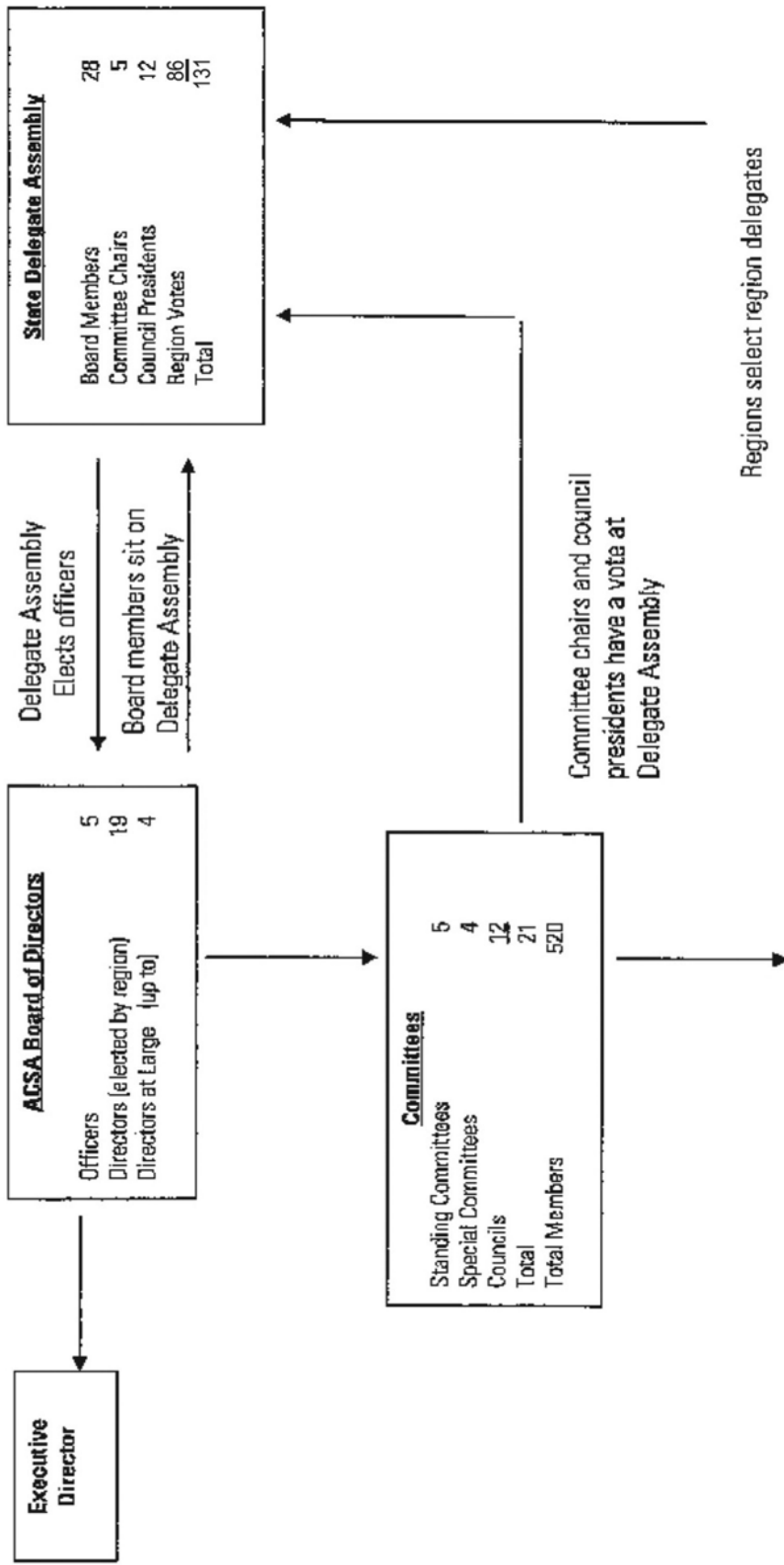
For over 50 years, A+ has been creating unique plans for educators. We offer the benefits you need at rates you can afford. You could save hundreds of dollars each year. Call today!

**Call today for a free quote,  
toll-free: 1-888-744-9717.**



**[www.APlus.com](http://www.APlus.com)**

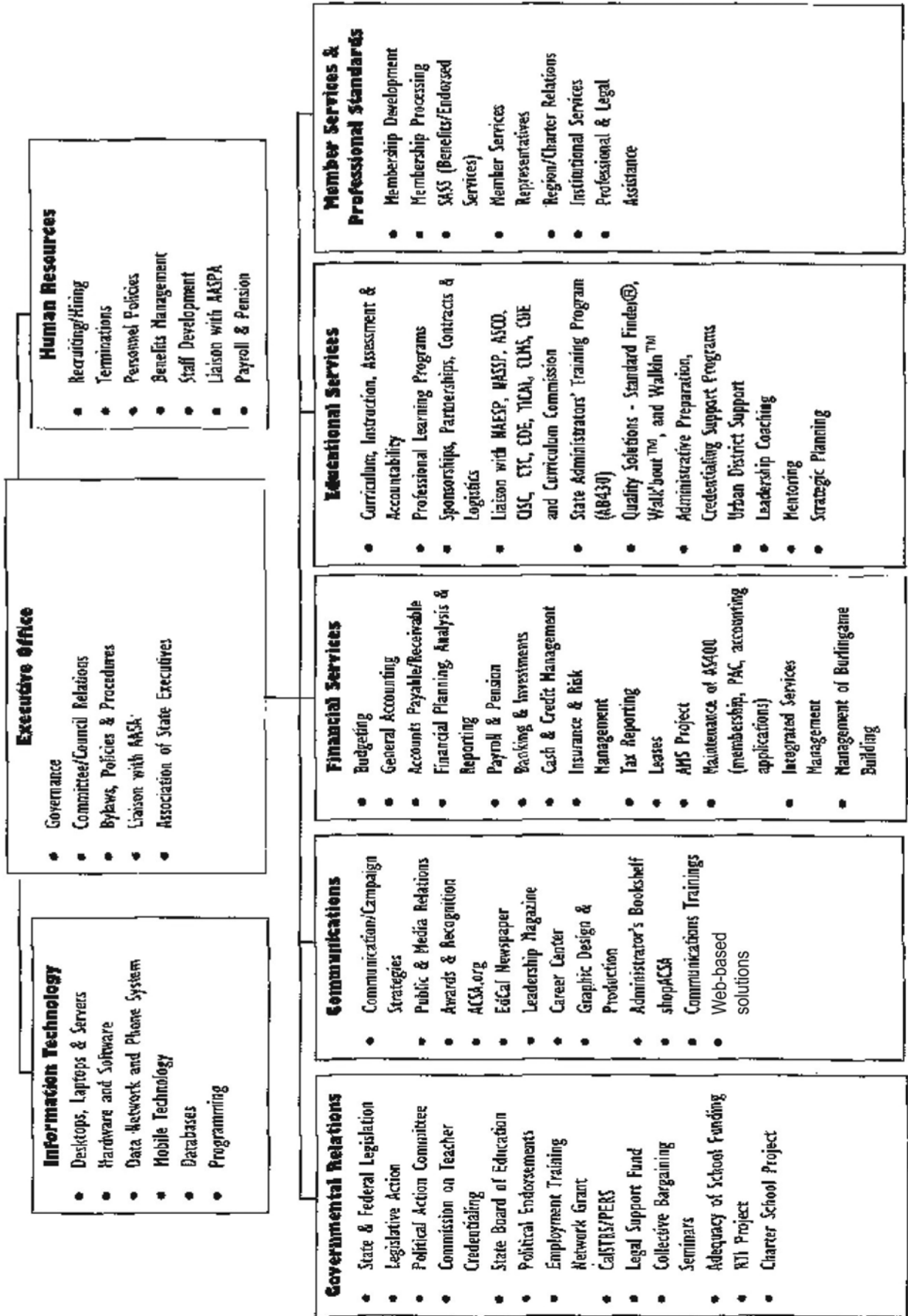
# HOW STATE ACSA WORKS



Standing Committees: Region presidents nominate members of standing committees

Councils: Regions may hold elections or region presidents may appoint council members.

# ACSA Organization Chart



Note: All departments have council/sector/office liaison responsibilities.

# Highly Accalimed Country Dining



*The Hodel Family has been serving Bakersfield for over 35 years. Hodel's Country Dining is a restaurant which has been applauded for its charming atmosphere, wonderful award-winning food and heavenly homemade desserts and breads. Visit Hodel's and rediscover food prepared the "old fashioned" way.*



**5917 Knudsen Drive • Bakersfield, CA**

**(661) 399-3341**

*Restaurant • Banquet Rooms • Catering • Homemade Baked Breads & Desserts*





# **KERN TROPHIES**



2015 "F" STREET - BAKERSFIELD, CA. 93301

*"Awards for Champions"*

**FAMILY OWNED & OPERATED**

**Ira and Mary Sullivan**

**Christy Garnas (McCoy)**

**BUILD YOUR OWN TROPHY**

**[www.kerntrophies.com](http://www.kerntrophies.com)**

**(661) 324-9265**

**FAX (661) 324-1209**

Hours: 8:30 - 5:00 - Monday thru Friday

